

From Ridge to River: Invasive Species Challenges  
and Collaboration in SLELO and the Black River  
Watershed

**Black River Watershed  
Conference  
6/2/2026**



**INVASIVE SPECIES  
MANAGEMENT**

SAINT LAWRENCE  
EASTERN LAKE ONTARIO

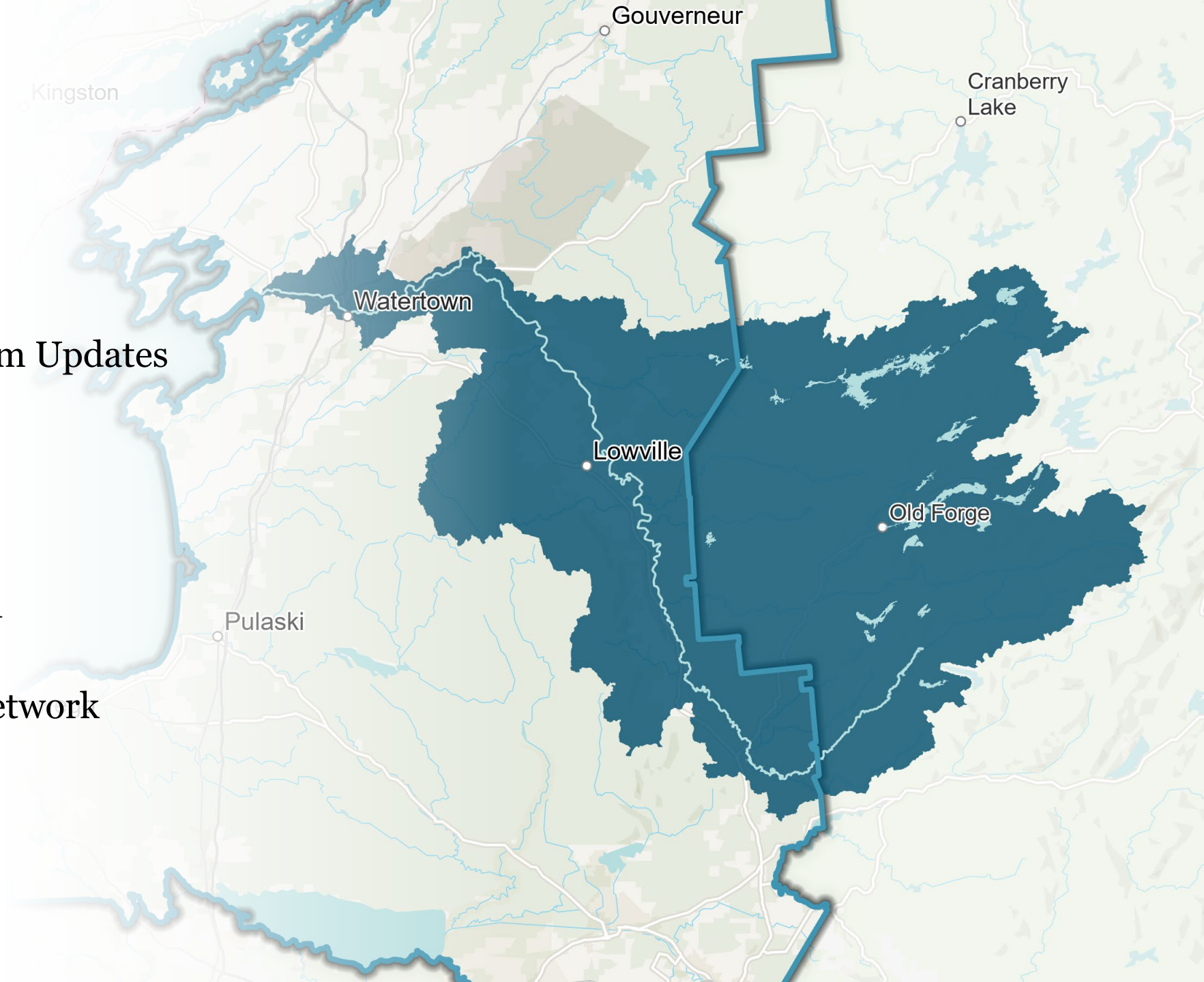
**Presenter:**

**Adrien Glenn Owens  
Aquatic Restoration and  
Resiliency Coordinator**

**SLELO PRISM- The Nature  
Conservancy**

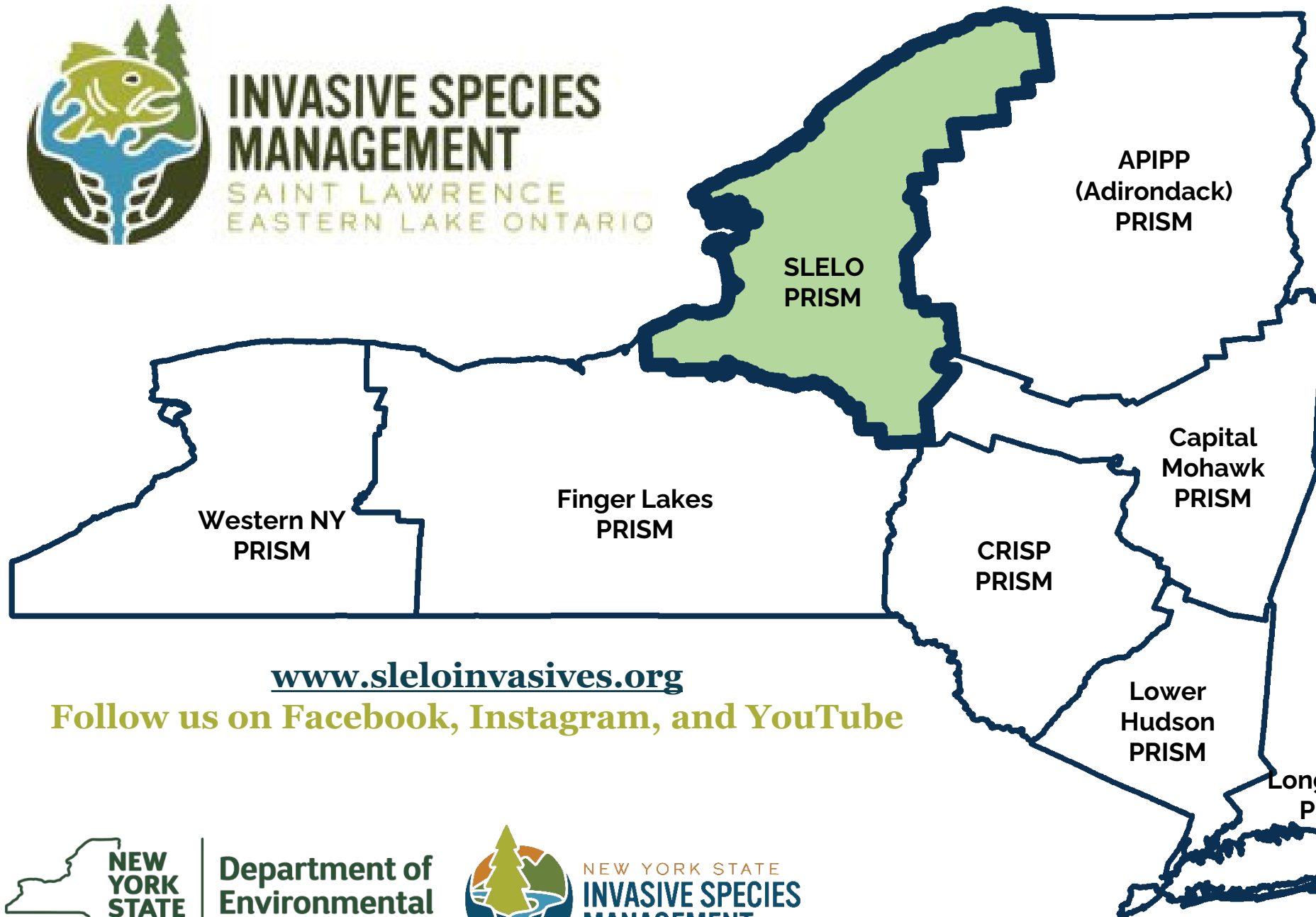
# Overview

- Introduction to SLELO PRISM
- Terrestrial and Aquatic Program Updates
  - EDRR surveys
  - Management
  - Restoration
- Upcoming ways to get involved
  - Volunteer Surveillance Network





**INVASIVE SPECIES  
MANAGEMENT**  
SAINT LAWRENCE  
EASTERN LAKE ONTARIO



**SLELO PRISM is  
Coordinated by the  
NYS DEC  
& Hosted by:  
The Nature Conservancy**

**Where We Work:**  
Oneida  
Oswego  
Jefferson  
Lewis  
St. Lawrence

**What We Do:**  
Collaborate with our  
partners to protect our lands  
and waters from the impacts  
of invasive species.

[www.sleloinvasives.org](http://www.sleloinvasives.org)

**Follow us on Facebook, Instagram, and YouTube**



**Department of  
Environmental  
Conservation**



NEW YORK STATE  
**INVASIVE SPECIES  
MANAGEMENT**



# The Role We Play

## Resources

- Website
- Newsletter
- Survey & annual reports
- Collaboration

## Education/Outreach

- Events
- Trainings
- Media

## Management

- Prioritized Species List
- Priority Conservation Areas
- Restoration



**INVASIVE SPECIES  
MANAGEMENT**  
SAINT LAWRENCE  
EASTERN LAKE ONTARIO

*"Teaming Up To Stop The Spread of Invasive Species"*

[www.sleloinvasives.org](http://www.sleloinvasives.org)



### Tier 1

#### *Prevention/Early Detection Spp.*

Not in PRISM, but within 100 mile buffer or introduction pathway exists. Highest level of early detection survey efforts.

### Tier 2

#### *Eradication*

Present in PRISM, but at low abundance making eradication feasible within Priority Conservation Areas (PCA's).

### Tier 3

#### *Suppression*

Too widespread for eradication from PRISM. Targeted management to suppress the population within Priority Conservation Areas (PCA's).

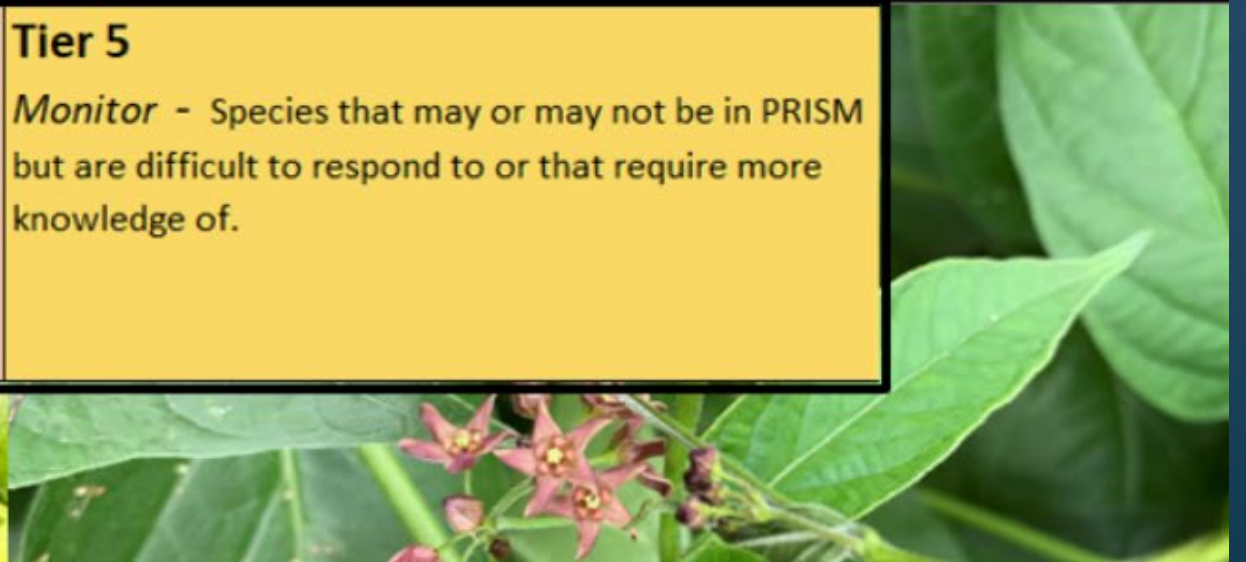
### Tier 4

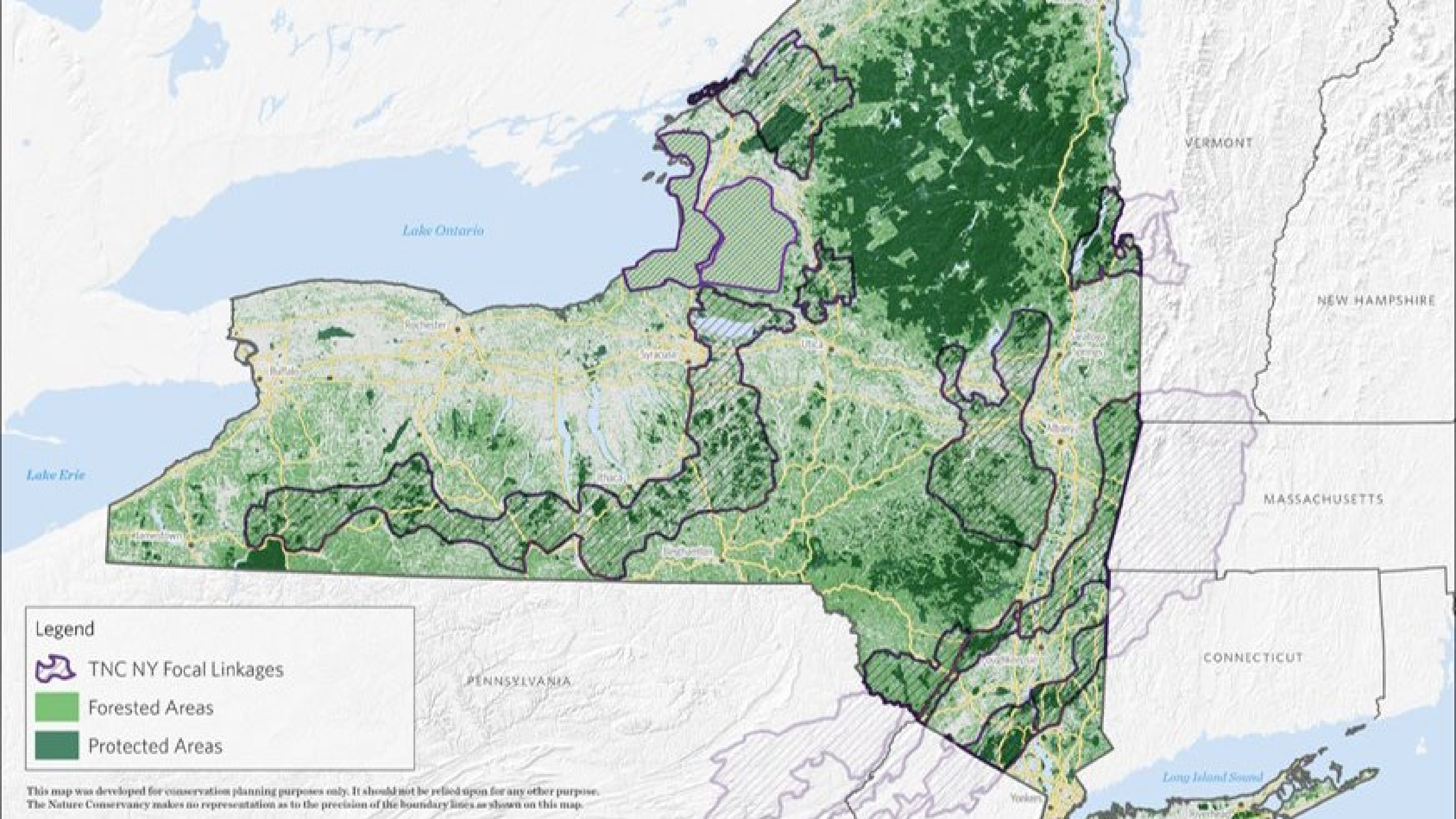
#### *Local Control*

Present / widespread throughout PRISM with no chance of eradication. Localized, landowner mgnt applied to protect high priority resources like rare plant or recreation

### Tier 5

*Monitor* - Species that may or may not be in PRISM but are difficult to respond to or that require more knowledge of.





**Legend**

-  TNC NY Focal Linkages
-  Forested Areas
-  Protected Areas

This map was developed for conservation planning purposes only. It should not be relied upon for any other purpose. The Nature Conservancy makes no representation as to the precision of the boundary lines as shown on this map.

# Hemlock Woolly Adelgid Surveys (HWA)

- HWA found at: **Derby Hill Observatory, Three Mile Bay, and Hamilton College**
- HWA Winter mortality survey: **90.5% mortality rate this year**



# 2026 Terrestrial Early Detection Efforts

- Black Pond WMA
- Brasher State Forest
- Chaumont Barrens Preserve
- Deer Creek WMA
- El Dorado Preserve
- Wolf Lake State Forest





15 PCAs being treated by chemical or manual hand pull by contractors or SLELO staff

- Swallowwort
- Invasive bittersweet
- Phragmites
- Yellow Iris
- Invasive knotweed

# 2026 Giant Hogweed Control

- Prioritized Sites: 67
- Root Cut Only this year



# Biological Controls for Invasive Species Management

- **Pale Swallowwort**
  - No future *Hypena opulenta* moth releases
- **Emerald Ash Borer**
  - Rice Creek Field Station staff will be supporting an additional year of EAB Biocontrol Establishment Surveys
  - Main target of survey is *Oobius agrili*
- **Hemlock Woolly Adelgid**
  - Biocontrol Agents: beetles, silver flies
  - NYSHI will be setting up traps at Independence Park for establishment surveys.
- **Spotted Knapweed**
  - Biocontrol Agents: Spotted Knapweed Root Weevil, release planned for July/August



*Chrysochus asclepiadeus*



*Spathius galinae*

# Restoration Plantings

- Closing the loop in invasive species management
- Five-year monitoring framework





**INVASIVE SPECIES  
MANAGEMENT**  
SAINT LAWRENCE  
EASTERN LAKE ONTARIO

# Land Protector Learning Experience

**Webinar Training: 6/3/26, 1 PM–2:30 PM**  
**Field Sessions Held June–July & October 2026**

- Learn to recognize and report invasive species.
- Gain hands-on experience with manual management & restoration.



Visit [sleloinvasives.org/events](https://sleloinvasives.org/events) to register and to view a full schedule.

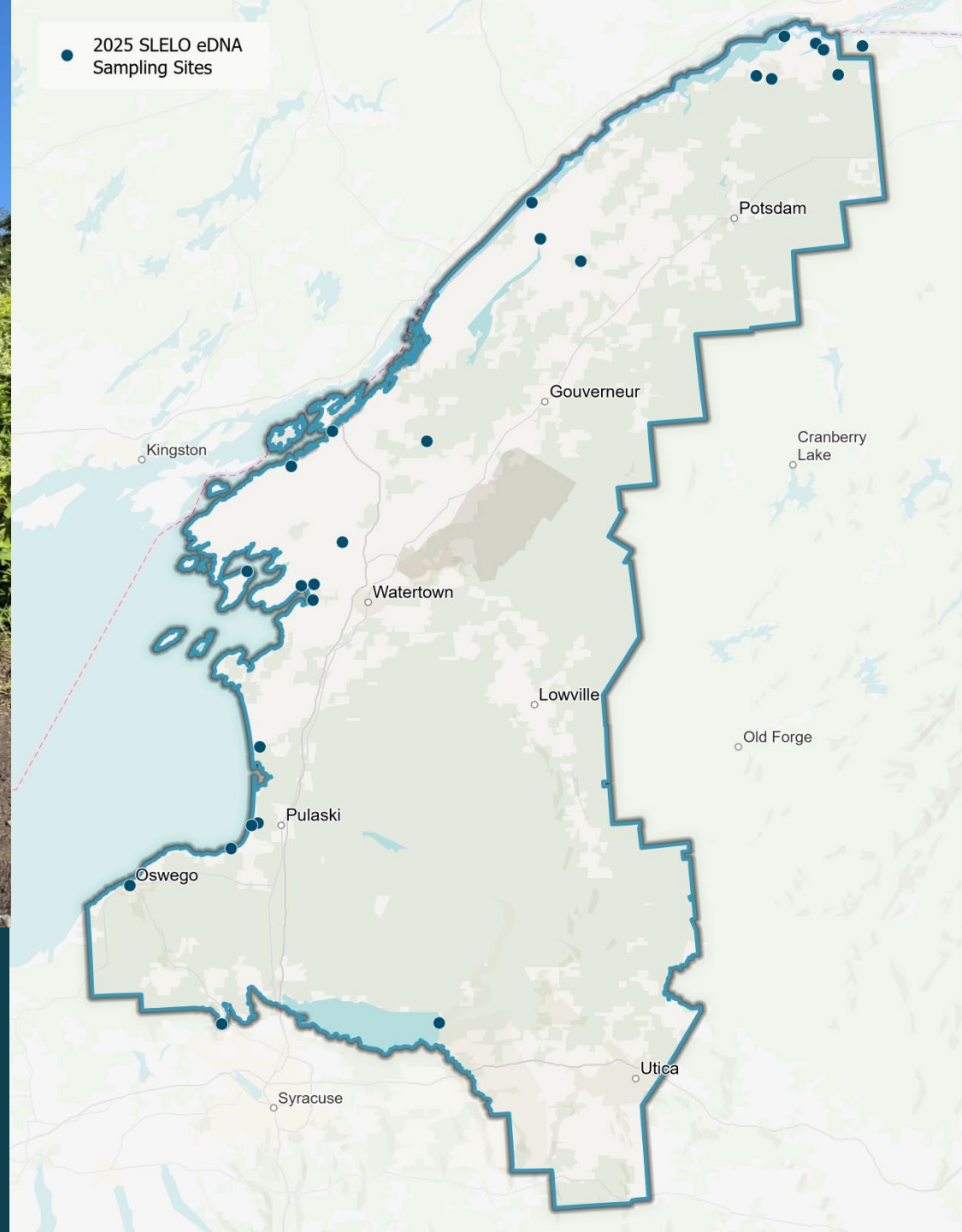
# 2026 Early Detection Efforts

## Primary Sites:

- Lakeview WMA- Lakeview Pond
- Upper and Lower Lakes WMA
- **Whetstone Reservoir WMA**
- Wilson Hill
- Three Rivers Intersection



# Environmental DNA (eDNA)



- Invasive water milfoil
- Rusty crayfish
- Tench
- Asian carp
- Tubenose goby
- Round goby
- Tubenose goby
- Northern snakehead
- Hydrilla
- Fanwort





## Aquatic Invasive Species Learning Experience (AISLE) and Water Protectors Program

- **Session 1: Webinar Plant ID Training**  
**When:** June 10th, 10 AM-12 PM
- **Session 2: In-Person Plant ID Workshop**  
**When:** July 10th, 1 PM- 3 PM  
**Where:** Redwood Hill Preserve
- **Session:3 Guided Paddle**  
**When:** August 14th, 10 AM- 1 PM  
**Where:** Theresa/Hammond, NY (Indian River Lake TBD)

## Welcome to the SLELO PRISM Aquatic Volunteer Surveillance Network!

Use this map to indicate what waterbody you will survey for aquatic invasive species this summer.

### To adopt a waterbody:

1. Click the waterbody polygon on the map and select the link for "Adopt a Waterbody". (Note: Waterbodies can be adopted by more than one volunteer!)
2. Complete all required fields in the signup form to select your waterbody.

Volunteers are asked to submit both "detected" and "not-detected" reports for the following invasive aquatic plant species using the iMapInvasives mobile app:

- Eurasian Watermilfoil
- Fanwort
- Frogbit
- Hydrilla
- Water Chestnut
- Water Soldier
- Yellow Iris

### Before you go!

Ensure you have [iMapInvasives](#) and [iNaturalist](#) applications. 

[Learn More](#)



## 2026 Water Protectors

1

### Waterbodies Adopted This Year

 Aquatic VSN Signup

### Previously Adopted Waterbodies

 Aquatic VSN Signup

## Total Number of Water Protectors

31

To adopt a waterbody not featured on this map, please contact SLELO's Aquatic Restoration & Resiliency Coordinator Adrien Owens (Adrien.Owens@tnc.org).

# Water Chestnut Pulls 2026

**Oswegatchie River,  
Heuvelton**

• **Date:** July 17th

• **Time:** 9:45 AM- 4 PM

## **Lakeveiw WMA**

South Colwell Pond,  
Ellisburg

• **Date:** July 22<sup>nd</sup>

• **Time:** 9 AM- 1:30 PM

## **Guffin Bay, Dexter**

• **Date:** Friday, August 7th

• **Time:** 9 am-12:30 PM



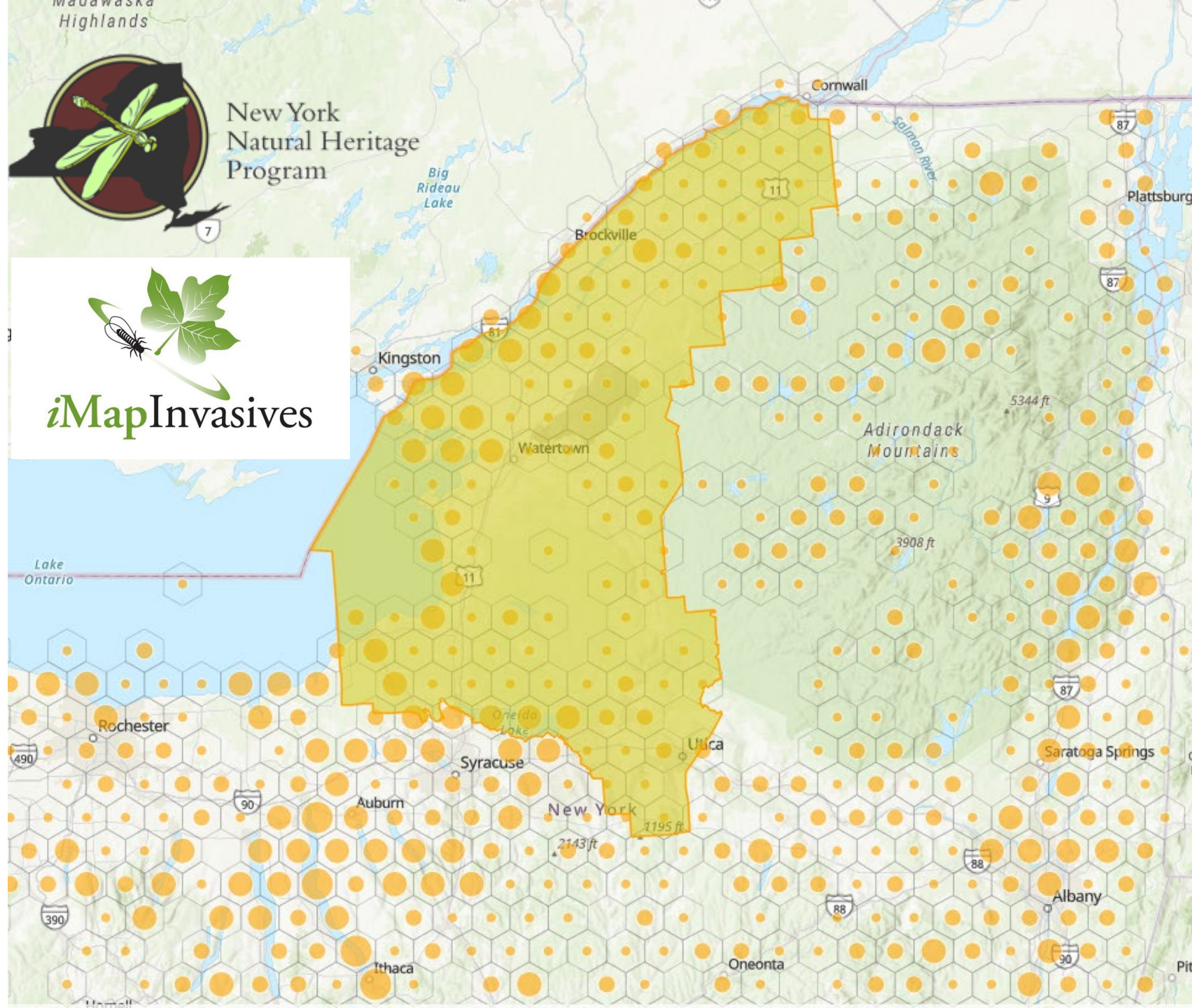


# Aquatic Plant Restoration Pilot Project

Collection, propagation, overwintering, and preparation of *Vallisneria americana* plants for aquatic focused restoration

# Your Data Matters!

- Enhances early detection efforts
- Triggers response efforts
- Strategizes management initiatives
- Shows treatment effectiveness





# INVASIVE SPECIES MANAGEMENT

SAINT LAWRENCE  
EASTERN LAKE ONTARIO

**Adrien Owens**

Aquatic Restoration and Resiliency  
Coordinator

[Adrien.Owens@tnc.org](mailto:Adrien.Owens@tnc.org)



# INVASIVE SPECIES MANAGEMENT

SAINT LAWRENCE  
EASTERN LAKE ONTARIO

## Meet the SLELO PRISM Team



**Brittney  
Rogers**

**Invasive Species  
Program Director  
ISPD**

[Brittney.rogers@tnc.org](mailto:Brittney.rogers@tnc.org)  
Phone: 315-287-6880



**Megan  
Pistolese  
Shaw**

**Education & Outreach  
Coordinator  
EOC**

[megan.pistolese@tnc.org](mailto:megan.pistolese@tnc.org)  
Phone: 315-522-1258



**Robert  
Smith**

**Terrestrial Restoration  
and Resiliency  
Coordinator  
TRRC**

[robert.l.smith@tnc.org](mailto:robert.l.smith@tnc.org)  
Phone: 315-522-1389



**Adrien  
Owens**

**Aquatic Restoration and  
Resiliency Coordinator  
ARRC**

[adrien.owens@tnc.org](mailto:adrien.owens@tnc.org)  
Phone: 315-962-5977



**Carolyn  
Koestner**

**Conservation and  
Geographic Information  
System Analyst  
CGA**

[carolyn.koestner@tnc.org](mailto:carolyn.koestner@tnc.org)  
518- 576-7253