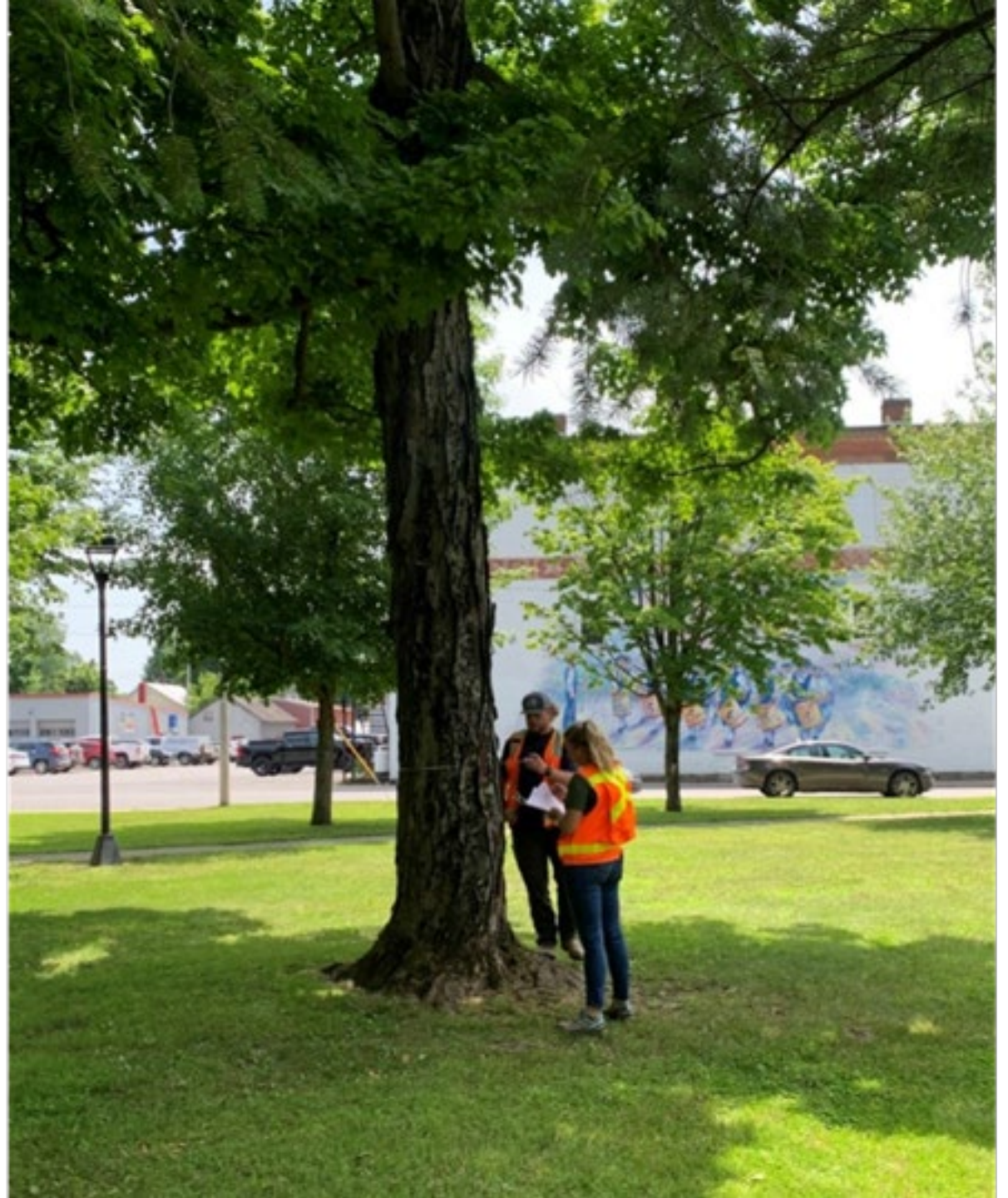


# URBAN/MUNICIPAL TREE INVENTORY AND MANAGEMENT PLAN



Oneida County Soil and Water  
Conservation District





## Starting Stages:

- Why a tree inventory?
- Municipal owned/maintained rights-of-way.
- What will be included?
- Outcomes of the inventory.



# Inventory Information:

- Species
- Diameter at breast height (DBH)
- Health of tree
- Impact assessment (utilities and sidewalks)
- GPS location
- Canopy coverage
- Structural integrity
- Maintenance recommendations

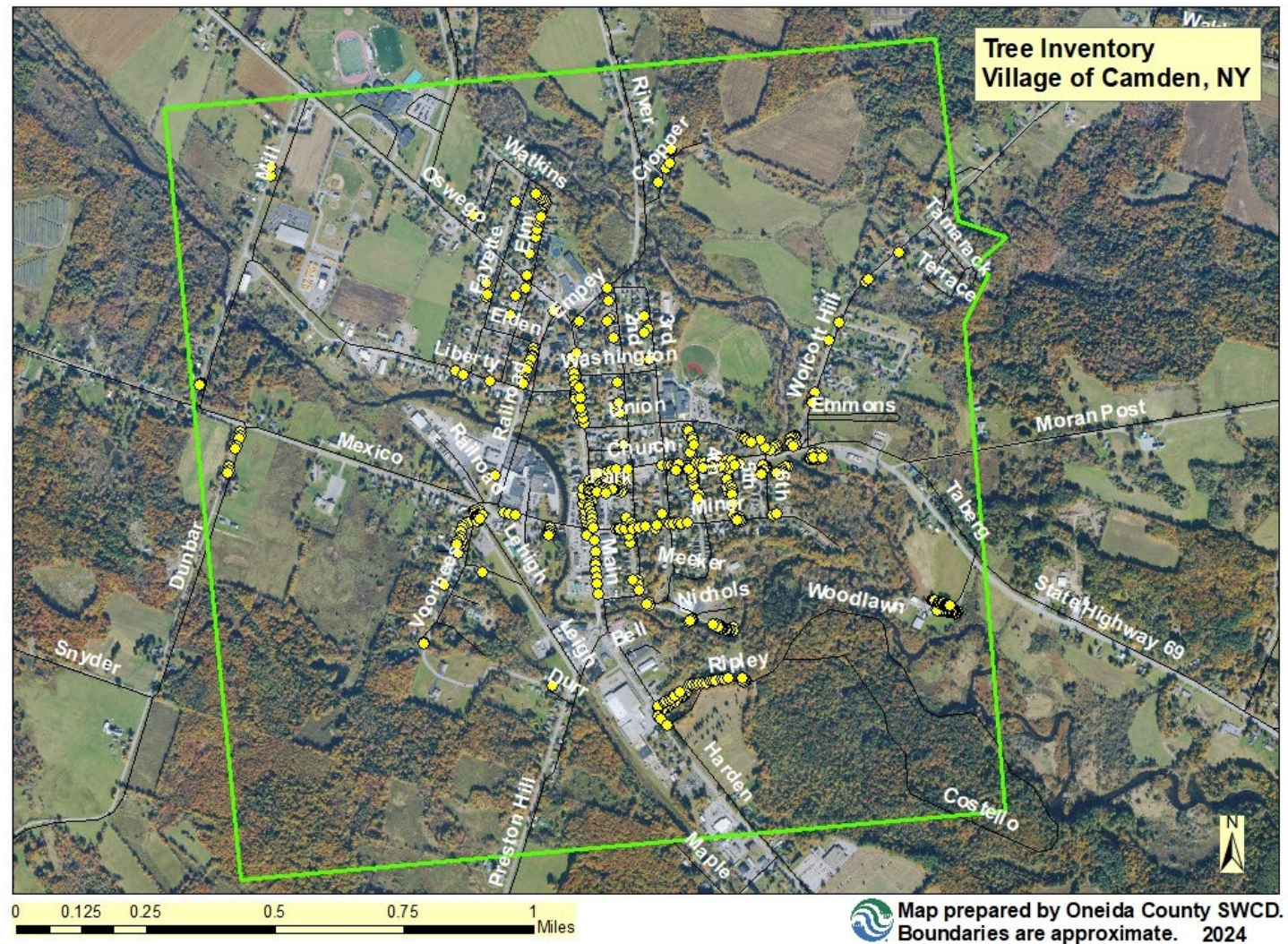




# Final Product:

- Interactive Map
- Binder of full inventory and management plan
- Specific information on trees and maintained

[Camden Map - Google My Maps](#)





# QUESTIONS

## CONTACTS:

**Jessica Armstrong – District Manager**

[Jessica.Armstrong@OneidaCountySWCD.org](mailto:Jessica.Armstrong@OneidaCountySWCD.org)

315-736-3334 Extension 135

**Payton Reese – Water Quality Specialist**

[Payton.Reese@OneidaCountySWCD.org](mailto:Payton.Reese@OneidaCountySWCD.org)

315-736-3334 Extension 134

