

Aquatic Invasive Species Survey of Limekiln Lake



HAMILTON COUNTY
Soil & Water Conservation District





Katie Whitkovits,
District Technician

LAKE MONITORING PROGRAM

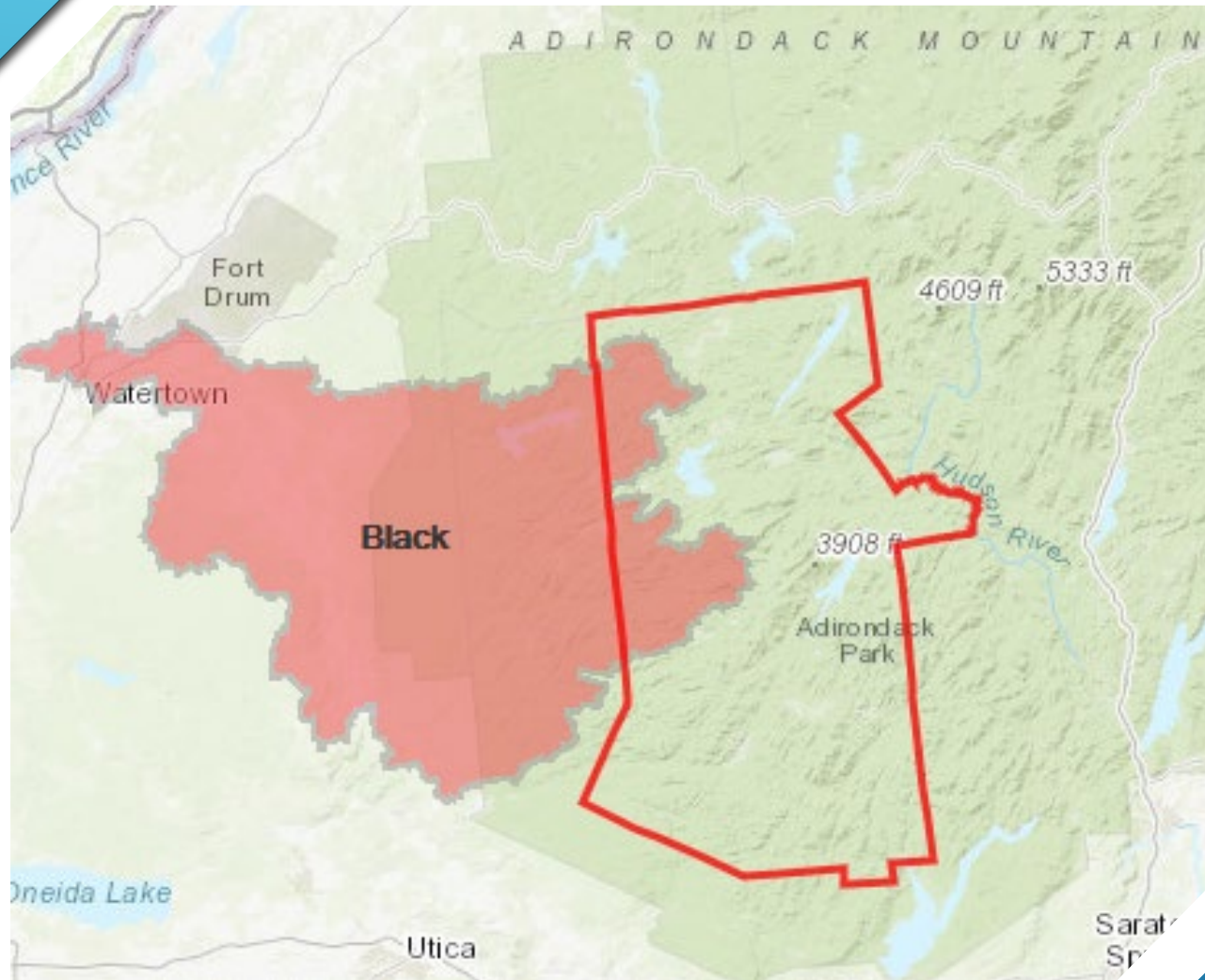
Procedure

- 19 lakes, May – October, deepest
- Field data
 - Weather trends
 - YSI Pro DSS
- Water sample collection
- Analytical parameters



Lake monitoring equipment.

BLACK RIVER WATERSHED IN HAMILTON COUNTY



Fulton Chain

- Fourth, Fifth, Sixth, Seventh, & Eighth Lakes

Limekiln Lake

AQUATIC INVASIVE SPECIES (AIS)

Why should we care?

- Harms recreation
- Damages habitat for natives
- Hurts industry
- Harmful to humans

Always on the look out!
(Robbin's Pondweed)



WHAT TO LOOK FOR?



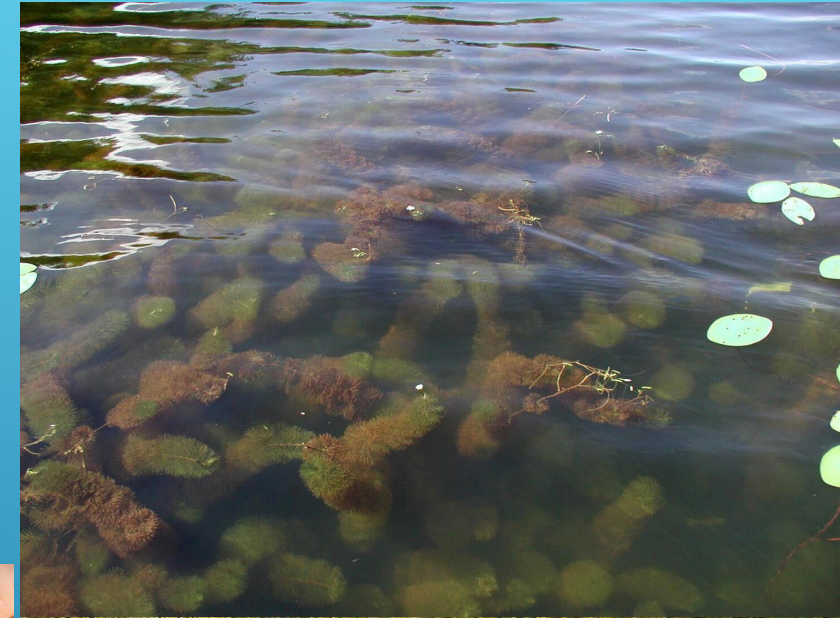
Photo credit: Adirondack Park Invasive Plant Program adkinvasives.com

PRISM – Partnership for Regional Invasive Species Management

FANWORT

European frog-bit

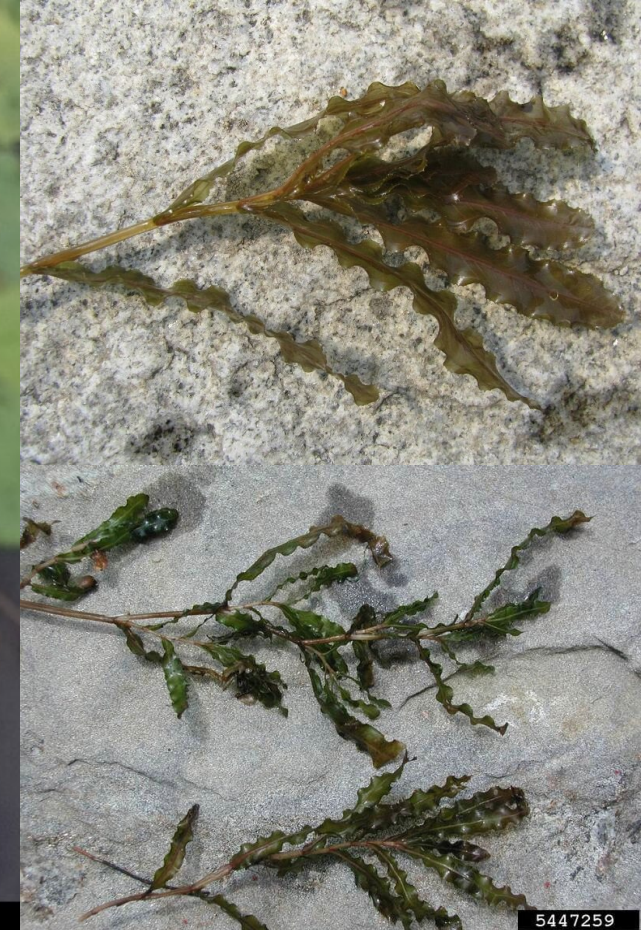
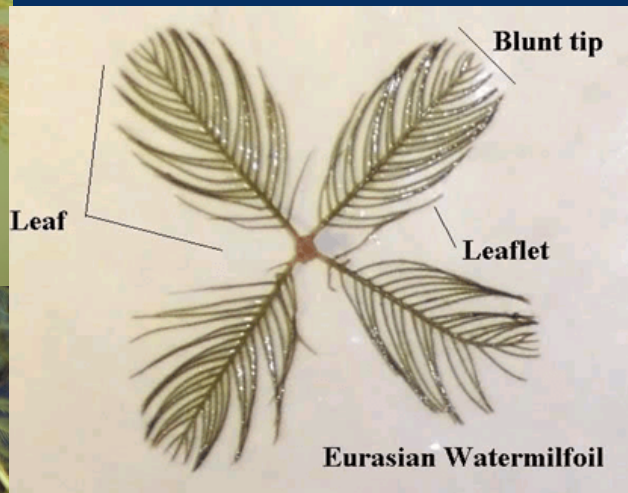
- Free-floating annual
- Small, heart-shaped floating leaves
- 3 petaled white flower
- Stems get tangled
- Submerged perennial
- Creates dense stands
- Opposite leaves are fan-like



5396781

EURASIAN WATERMILFOIL

- Submerged perennial with many native look-alikes
- Feathery leaves in whorls of 4
- Blunt leaf tips
- Can grow up to 20ft long



CURLY PONDWEED

- Submerged perennial
- Many native look-alikes
- Wavy lasagna-shaped leaves
- Form under ice during winter
 - Difficult to identify
 - Dies off early summer

Photo credit: Adirondack Park Invasive Plant Program adkinvasives.com



- HYDRILLA.** Submerged perennial with native look-alikes
- Leaves typically in whorls of 4 or more
 - Toothed edged leaves



STARRY STONEWORT



- Submerged micro-algae
- Bright green branches
- White star-shaped bulbils (reproductive structure)
- Can create dense mats



VARIABLE-LEAF WATERMILFOIL

- Submerged perennial with many native look-alikes
- Dense feathery leaves
- Resembles bottle brush
- Robust stem
- Emergent flower



- Floating annual
- Fast-growing
- Large rosette of triangular floating leaves
- Four-spiked nutlets



Photo credit: Adirondack Park
Invasive Plant Program
adkinvasives.com

WATER CHESTNUT

SPINY WATERFLEA & FISHHOOK WATERFLEA (TINY CRUSTACEANS)

Photo credit: Adirondack Park
Invasive Plant Program
adkinvasives.com & Hamilton
County SWCD



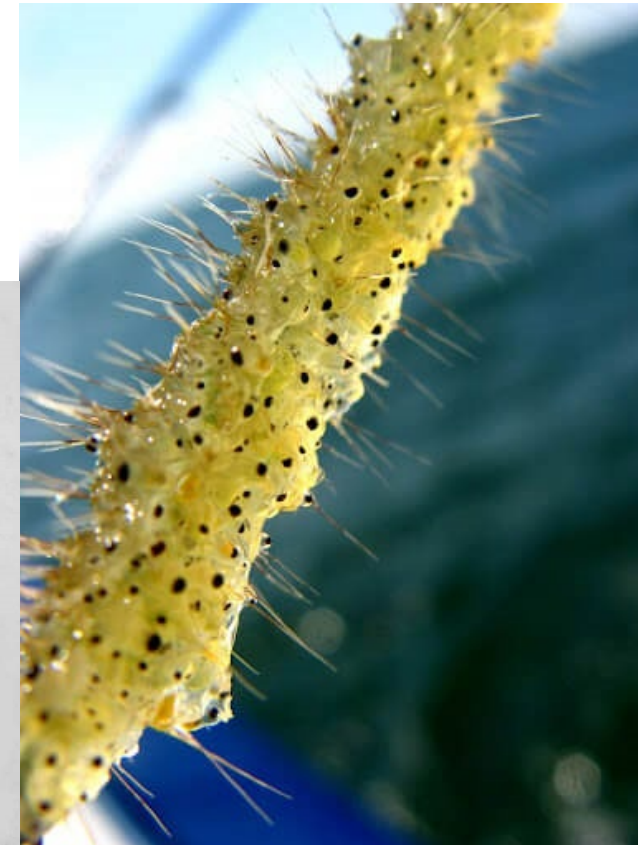
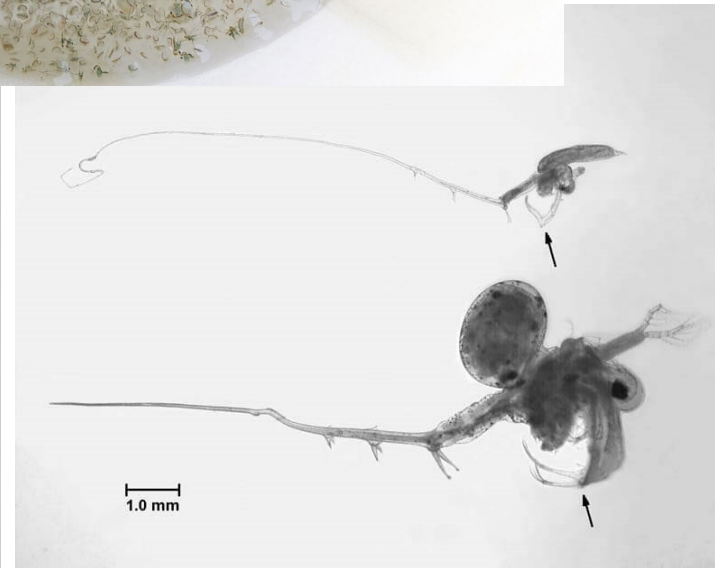
Spiny

- Long spine with *barbs*
- Clumps on fishing line – look and feel like gelatin



Fishhook

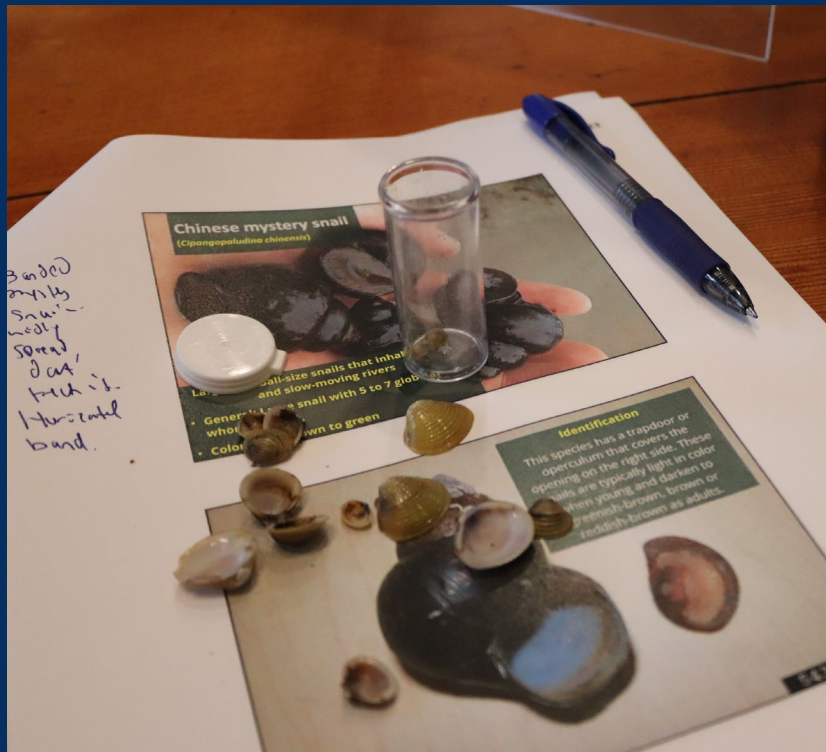
- Long spine with *S-shape*
- Clumps on fishing line – look and feel like gelatin



LAKE PROTECTORS TRAINING - APIPP

Offered online & in-person

- Also recorded YouTube videos



Register at www.adkinvasives.com/events

Techniques & Equipment

- Pick a nice day!
- Top-down Visual Inspection
- Possible Equipment:
 - AIS reference guide
 - Rake
 - Plankton Net
 - Phone - iMap Invasives App for reporting
 - White container
 - Underwater viewing tube

SURVEY OF LIMEKILN LAKE

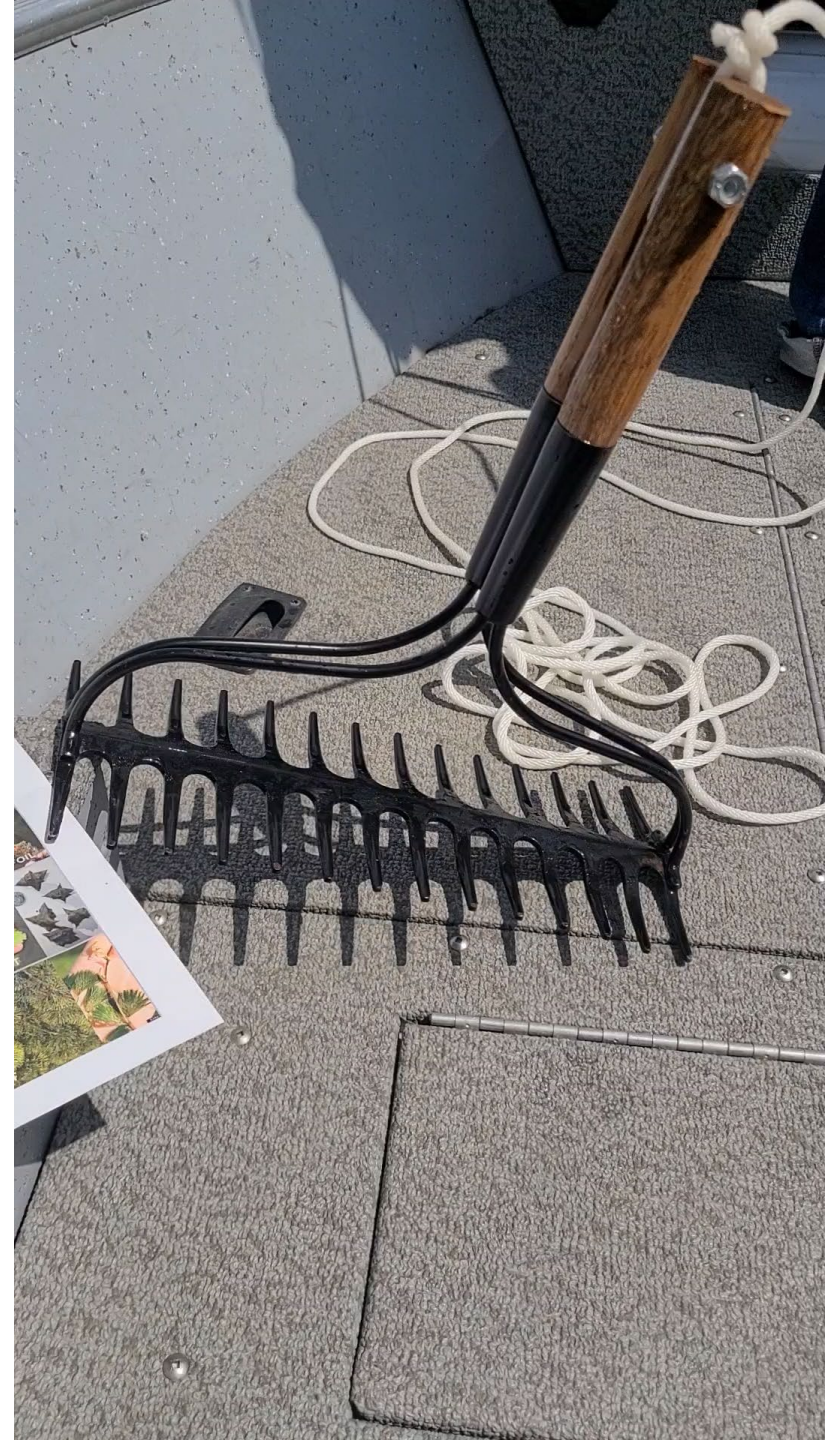


CAPTURE THE MOMENT

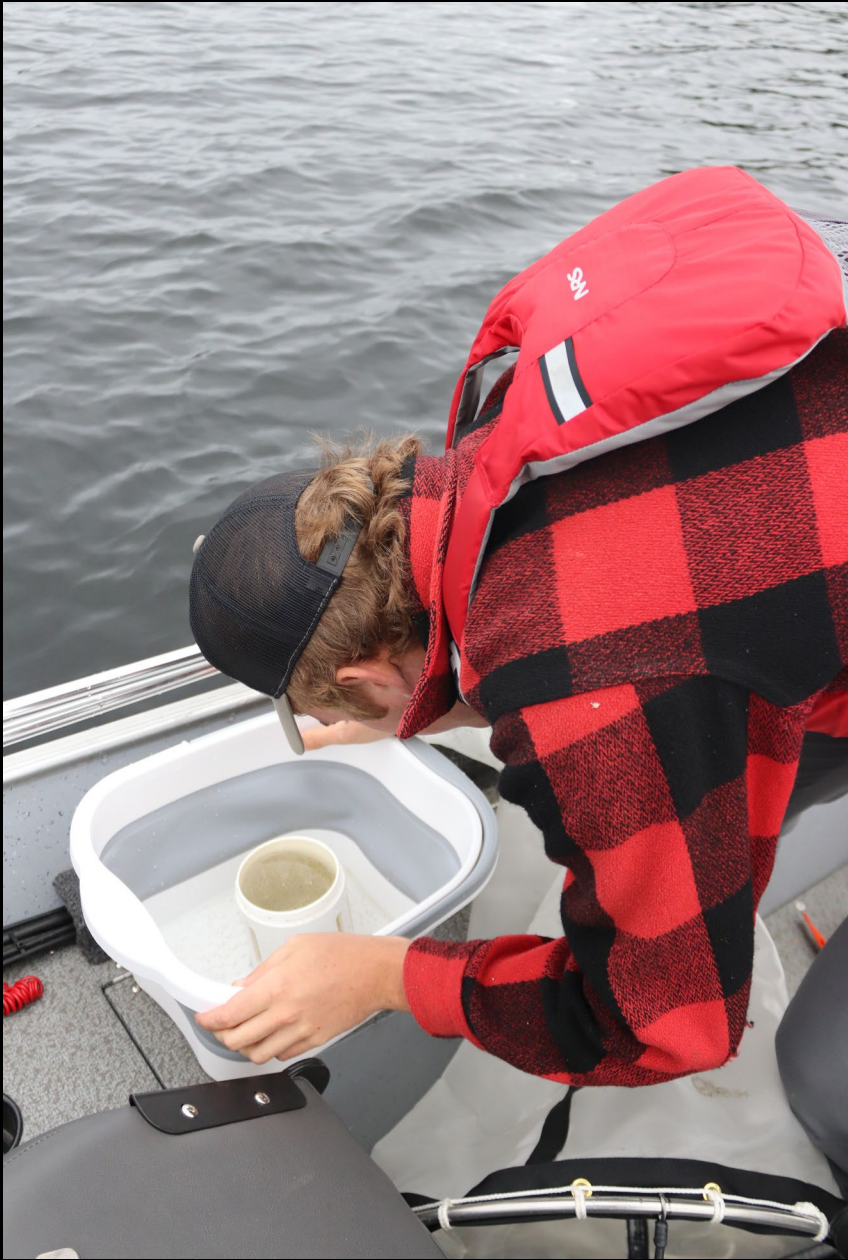
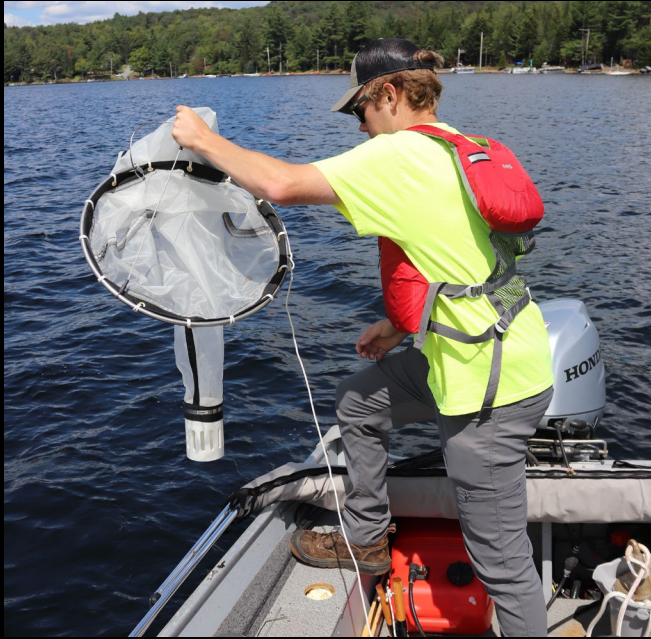
Good photos are key for identification!

- iMap Invasives App & reporting











FINDINGS – LIMEKILN LAKE

No invasive
species found!

BOAT WASH STATIONS

inspect your boat & trailer, let equipment dry out completely, hot water pressure wash

Check, Clean, Drain, Dry, Disinfect, & Visit Boat Stewards





QUESTIONS?

THANK YOU!



FLLowPA

FINGER LAKES - LAKE ONTARIO WATERSHED PROTECTION ALLIANCE

Katie WhitKovits

518-548-3991

katie@hamcoswcd.org

www.hamcoswcd.org



HAMILTON COUNTY

Soil & Water Conservation District

