



# BLACK RIVER WATERSHED SIGNAGE PROJECT



Nichelle Bailey-Swisher  
Lewis County  
Soil and Water Conservation District

Jackie Mahoney  
Lewis County Department of Recreation,  
Forestry and Parks





# *White ~ Still ~ & Wild*

## *A Blueway Trail Development Plan for the Black River*

*in Oneida, Lewis and Jefferson Counties  
New York State*



This document was prepared for the New York State Department of State  
with funds provided under Title 11 of the Environmental Protection Fund.

peter j. smith & company, inc.

September, 2007







# BLACK RIVER WATERSHED SIGNAGE PROJECT

River Signage



13 bridges



26 Signs

Boat Launches



Road Signage



10 Kiosks



Historical



Interpretive



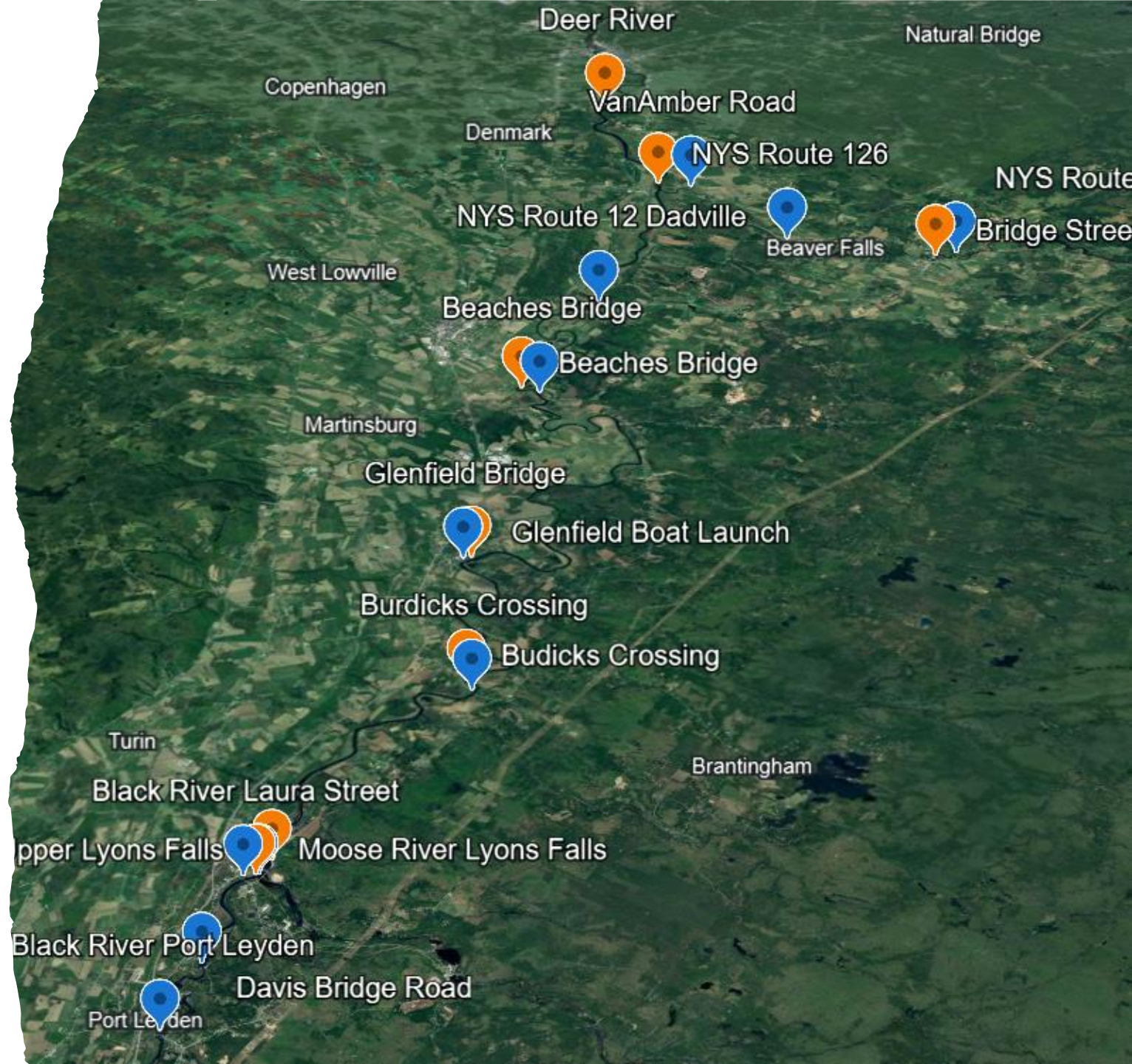
# Sign Plan



**KIOSKS**



**BRIDGE SIGNS**



# Laura Street (Davis Bridge Road 1.7 Miles)



**SAMPLE RIVER SIGNAGE**





## Boat Launch 2 Panel Kiosks

- Black River Hazards
- Historical Information
- Distances Between Launches



BLACK RIVER KIOSK EXAMPLES

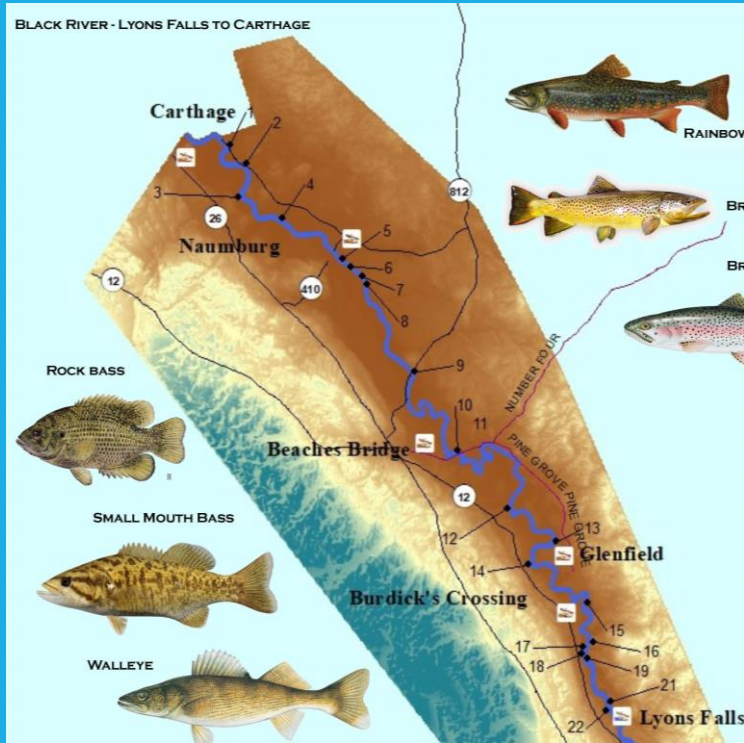


## BLACK RIVER KIOSKS

### Boat Launch Kiosks

- Black River Hazards
- Historical Information
- Distances Between Launches
- Invasive Species & Regulations





- 1 "Squash Hole" - Shoal
- 2 Ferry Crossing - Abutments
- 3 Carthage Rod and Gun Club- Abutments
- 4 Shoal
- 5 Basselin's Sawmill - Abutments
- 6 Boulders
- 7 Van Amber Brothers Sawmill - Abutments
- 8 Halls Farm - Boulders
- 9 Ellingsworth Bridge (NYS Route 812) - Abutments
- 10 Beaches Bridge (No. 4 Road) - Piles
- 11 Bushes Landing Lock and Dam - Dam Remnants

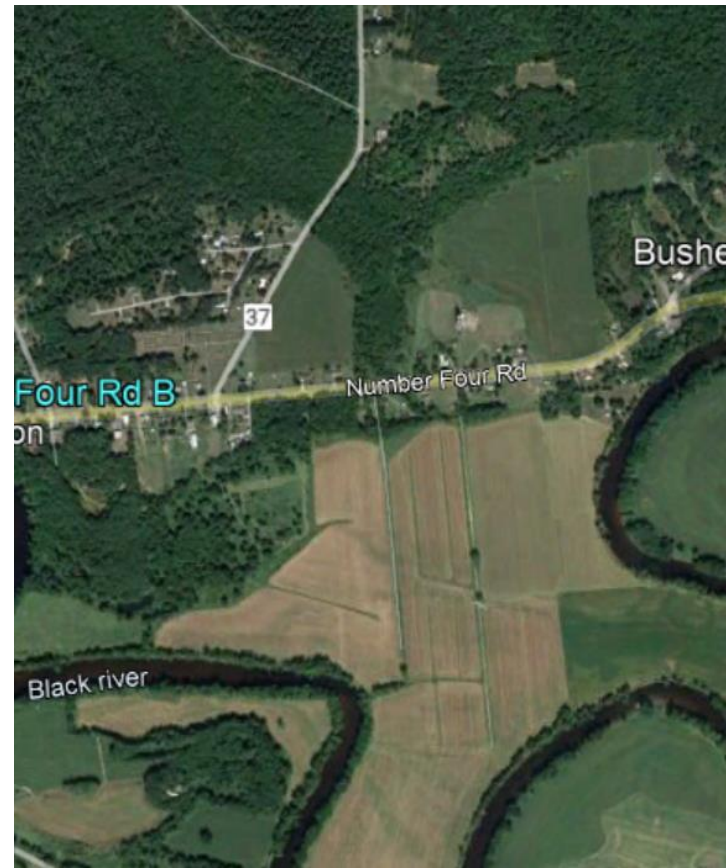
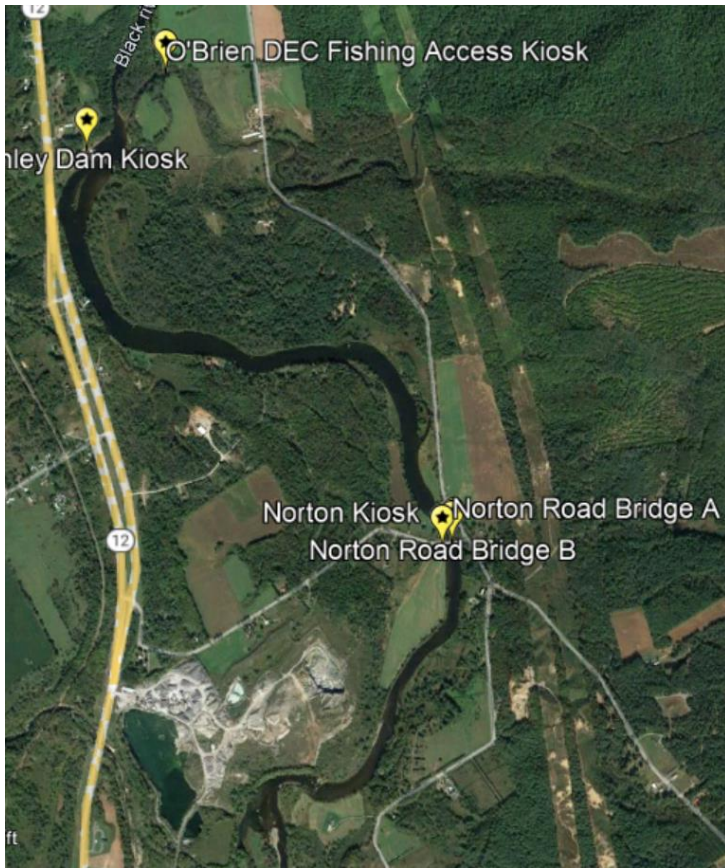


## FISHING ACCESS EXPANSION

### Develop More River Access Points

- Canoe and Kayak
- Full Motorboat Launches





# NEW UNDEVELOPED BOAT ACCESS POINTS

**Norton Road Bridge** in the Town of Leyden –Undeveloped roadside turnout for parking. This site could be developed into a river access point for anglers and for launching boats for a float to Denley Dam. Suggested improvements include parking, a river map sign, a picnic area, and car top boat launch

**Bush's Landing** is the location of a former lock and dam, hotel, post office and general store that could be developed into a new river access point. Improvements could include a concrete boat launch ramp, parking, picnic area, historic interpretive sign, river map sign and a restroom.



# Questions

**Nichelle Swisher**  
**[nichelleswisher@lewiscountyny.gov](mailto:nichelleswisher@lewiscountyny.gov)**

**Jackie Mahoney**  
**[jackiemahoney@lewiscountyny.gov](mailto:jackiemahoney@lewiscountyny.gov)**









# QUESTION AND ANSWER SESSION

## QUESTIONS YOU POSED TO US

1. Culvert Management
2. Dam Removal and Restoration
3. Didymo in trout streams
4. Erosion
5. Flood Control and Bridge Replacement on NYS Route 410
6. Potential for Hydroelectric opportunities at the 6ath Lake Dam
7. Reforestation Opportunities and Barriers in the BRW
8. Source Water Protection
9. Streambank Protection and Restoration
10. Water Quality and Climate Change Impacts





---

# NEXT STEPS



1. Formalize District Watershed Organization (BRWC) & Establish Administrative Framework
  2. Evaluate Existing Recommendations provided by BRAM, DEC, and 9E Plan
  3. Evaluate Watershed Needs Based on Water Quality Data from UFI
  4. Establish an Implementation Plan
  5. Establish Feasibility of Phase II
  6. Seek Funding Sources
-



