

# Oneida County SWCD

Payton Reese



# OUR FIELD STAFF



Tim Wimmer- Ag. Specialist



Jeremy Langner- AEM Coordinator



Payton Reese - Water Quality



Jessica McLaughlin- District Manager



Don Lynch- PE



Jessica Pyrda- Forester

# Soil and Water Benefit to Municipalities

Permitting - DEC and ACOE permits for projects we have experience working with those agencies and filling out those permits

We are also aware of many grants in the state and county that could be applied to projects to offset costs for municipalities

We have an engineer on staff who can help to create a design for projects and staff who are qualified to supervise the construction/installation

We also have the flexibility to work on private and public projects



# Benefits of Protecting Streambanks

Protecting streambanks helps prevent the loss of topsoil especially for farmers.

Protects infrastructure

Maintains water quality as increased sedimentation in the streams can allow for decreased drinking water quality

Sedimentation in streams also may be harmful to wildlife including trout

Riparian plantings within stream stabilization projects also help to reduce stream temperature which also is beneficial for trout and drinking water quality



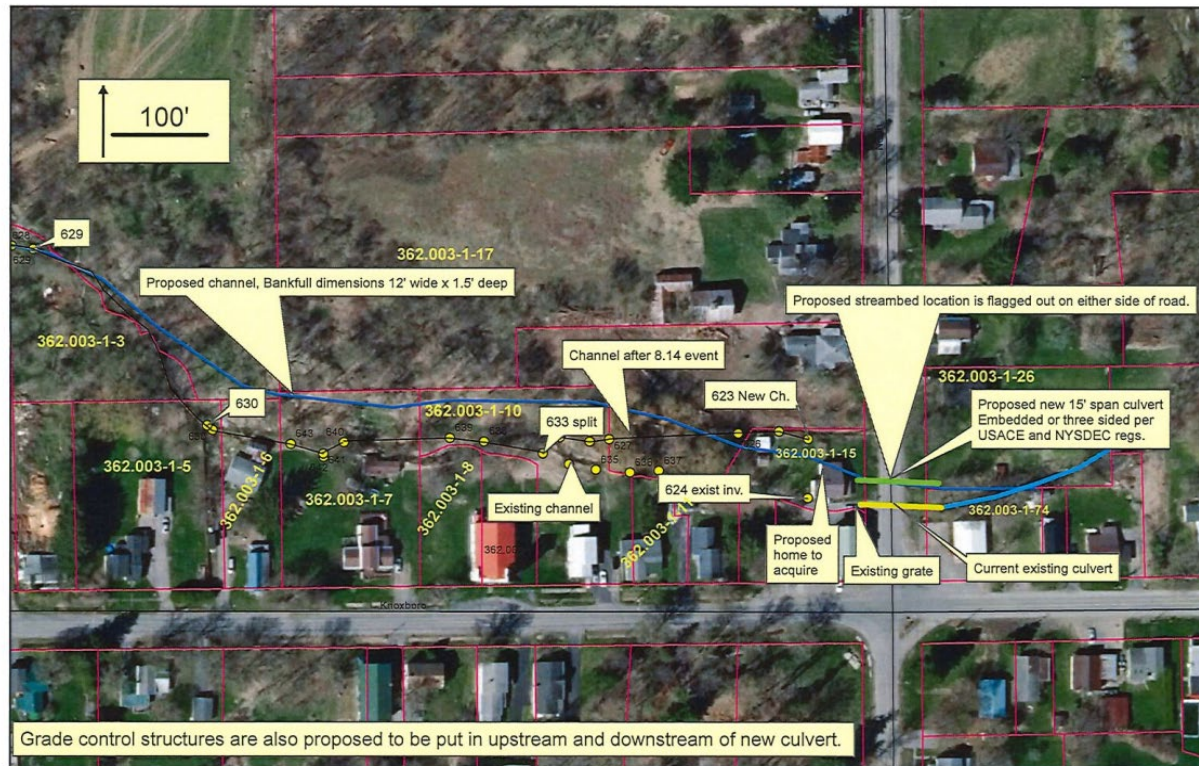
# Project Site - Before



Stream flowed into a culvert under this parking lot



Stream channel material deposited behind home



— Proposed Creek

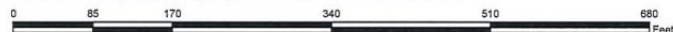
□ OC\_parcels\_Jan2018

Green line is proposed new crossing.

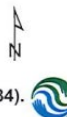
Yellow line is existing crossing.

Blue lines represents proposed new stream channel.

## Knoxboro Proposed project Plans



Map prepared by Oneida County SWCD (315-736-3334).  
Boundaries are approximate. Date: 1.8.19









## Contact Info

- 315-736-3334 ext: 134
- [payton.reese@oneidacountyswcd.org](mailto:payton.reese@oneidacountyswcd.org)