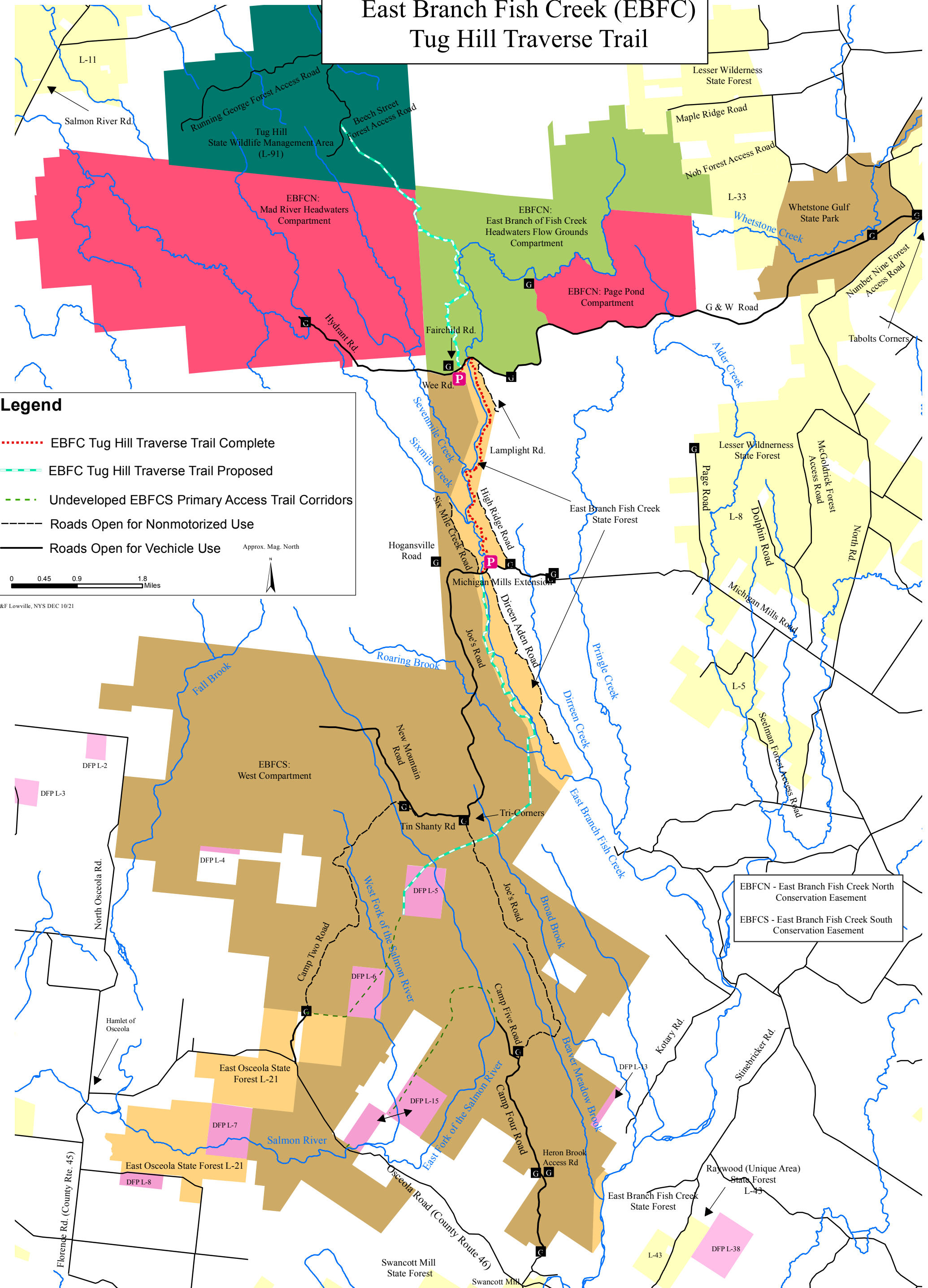


East Branch Fish Creek (EBFC) Tug Hill Traverse Trail



Legend

- - - - - EBFC Tug Hill Traverse Trail Complete
- - - - - EBFC Tug Hill Traverse Trail Proposed
- - - - - Undeveloped EBFC Primary Access Trail Corridors
- - - - - Roads Open for Nonmotorized Use
- — — — — Roads Open for Vehicle Use

Approx. Mag. North

0 0.45 0.9 1.8 Miles

EBFCN - East Branch Fish Creek North Conservation Easement
 EBFCS - East Branch Fish Creek South Conservation Easement

- State Wildlife Management Areas
- EBFCS West Compartment Easement Lands
- Whetstone Gulf State Park
- State Forests Outside of Plan Area
- EBFCN Easement Lands (Page Pond & Mad River Headwaters Compartments)
- EBFCN Easement Lands (EBFC Headwaters Flow Grounds Compartment)
- NYSDEC State Forests Adjacent to EBFC Compartments
- Detached Forest Pres. Parcels in the Plan Area

NEW YORK
STATE OF OPPORTUNITY

**Department of
Environmental
Conservation**

L&F Lowville, NYS DEC 10/21