

Tug Hill Regional Census Data Analysis

March 2015

TUG HILL COMMISSION ISSUE PAPER SERIES

TUG HILL COMMISSION
Dulles State Office Building

317 Washington Street

Watertown, New York 13601-3782

315-785-2380/2570 or 1-888-785-2380 fax: 315-785-2574

Email: tughill@tughill.org Website: <http://www.tughill.org>



The Tug Hill Commission *Technical and Issue Paper Series* are designed to help local officials and citizens in the Tug Hill region and other rural parts of New York State. The *Technical Paper Series* provides guidance on procedures based on questions frequently received by the Commission. The *Issue Paper Series* provides background on key issues facing the region without taking advocacy positions. Other papers in each series are available from the Tug Hill Commission at the address and phone number on the cover.

Tug Hill Regional Census Data Analysis

Availability of U.S. Census and American Community Survey data in forms easily used in computer mapping programs has led Commission staff to create the following series of maps for the Tug Hill Region. Statistics commonly used in community comprehensive plans, as well as other data of potential interest to local officials and residents, have been mapped for all 41 Tug Hill towns, which includes data for villages that might be located within those towns. This data analysis will be replicated in five year intervals, coinciding with the Tug Hill Commission's five year strategic plans. That will allow some tracking of how these statistics change over time.

For more information on the U.S. Census and American Community Survey, go to these websites:

United States Census Bureau: www.census.gov

American Community Survey: <http://www.census.gov/acs/www/>

American Fact Finder: <http://factfinder.census.gov/faces/nav/jsf/pages/index.xhtml>

Population

Population (2010) by town on Tug Hill ranges from a low of 78 in the Lewis County Town of Montague, to a high of 9,450 in the Oswego County Town of Hastings. As has been the case for decades, the towns in the core of Tug Hill have lower populations than those on the outer edges of the plateau. Towns that contain villages generally have higher populations than those without a village.

Population Change

In the decade between 2000 and 2010, 13 Tug Hill towns gained population, and 28 lost population. Gaining the most was Hastings (Oswego County) with an addition of 647 people, and losing the most was Lee (Oneida County), with a net loss of 389 people. Generally, towns in the northern part of the region grew, which may be attributable to growth at Fort Drum.

Overall, the total Tug Hill population went from 104,298 in 2000 to 103,955 in 2010, a drop of 343 people or 0.3%. Statewide, the population grew by 401,645, or 2.1%.

Population Density

Population density, which is defined as population per square mile, ranges from one person/square mile in Montague, to 206 people/square mile in Hastings. Nine core towns have 15 people or fewer

per square mile. Of the eight towns that have more than 100 people/square mile, four of them contain a village, and the other four are adjacent to an urban area (Watertown, Syracuse, Utica or Rome).

With a total area of 2,160 square miles, the overall population density of Tug Hill is 48 people per square mile.

Median Age

The youngest town-wide median age in the region was in Champion at 32, and the oldest town-wide median age was in Forestport at 54. Region-wide, the median age of the population was 40.9. Comparably, the statewide median age in 2010 was 38, and nationwide 37.2.

Median Household Income

Most Tug Hill towns have a median household income (MHI) below New York State's median household income of \$57,683, according to American Community Survey (ACS) 2008-2012 data. Ten Tug Hill towns had a median household income higher than New York State and sixteen towns had a higher MHI than the national figure, which was \$53,046. The median of all Tug Hill towns' MHIs was \$51,008.

Percentage of Persons with Income below Poverty Level

According to the 2008-2012 ACS data, the percentage of people with incomes below the poverty level varied greatly region-wide, with a high of 23% in Annsville and Amboy to a low of 2% in Pinckney. Both statewide and nationwide, 14.9% of people had an income below the poverty level. The median persons below poverty level percentage for all Tug Hill towns was 11.5%.

Household and Ownership Data


The final four maps in this series display Total Households (Estimated), Percent Owner-Occupied Housing Units, Percent Renter-Occupied Housing Units, and Percent Vacant Housing. As might be expected, the towns with smaller populations have a smaller number of households. Montague holds the record low number of households with 35, and Hastings the highest with 3,431. A household is defined by the census as all the people who occupy a housing unit as their usual place of residence.

Looking Ahead

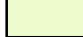
As stated earlier, this census analysis will be produced to accompany the Commission's Strategic Plan every five years. The goal of the analysis is to better inform communities and staff about trends in demographics, how these trends may affect attitudes reflected in community surveys, and help Commission staff better understand the needs of the region's towns and villages. Since this is the first time the Commission has produced the census analysis along with the strategic plan, it should be interesting to observe demographics in the coming years. We welcome your thoughts and suggestions about the demographics we have chosen for this accompanying document.


Population 2010 Census


Legend


 Tug Hill Region


Population

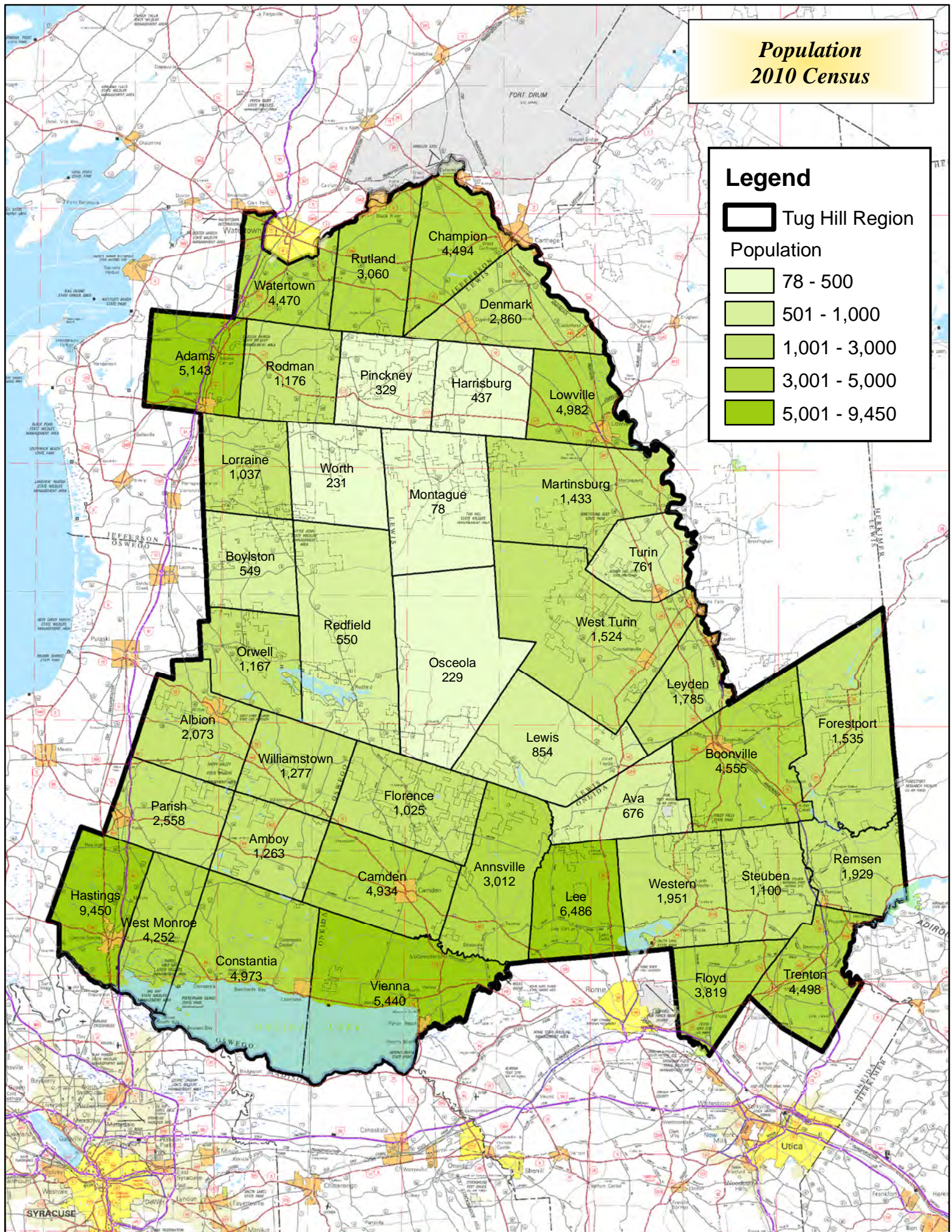
 78 - 500

 501 - 1,000

 1,001 - 3,000

 3,001 - 5,000

 5,001 - 9,450




Population Change 2000-2010


Legend


 Tug Hill Region


Tug Hill Population Change
2000 - 2010

 -389 - -201

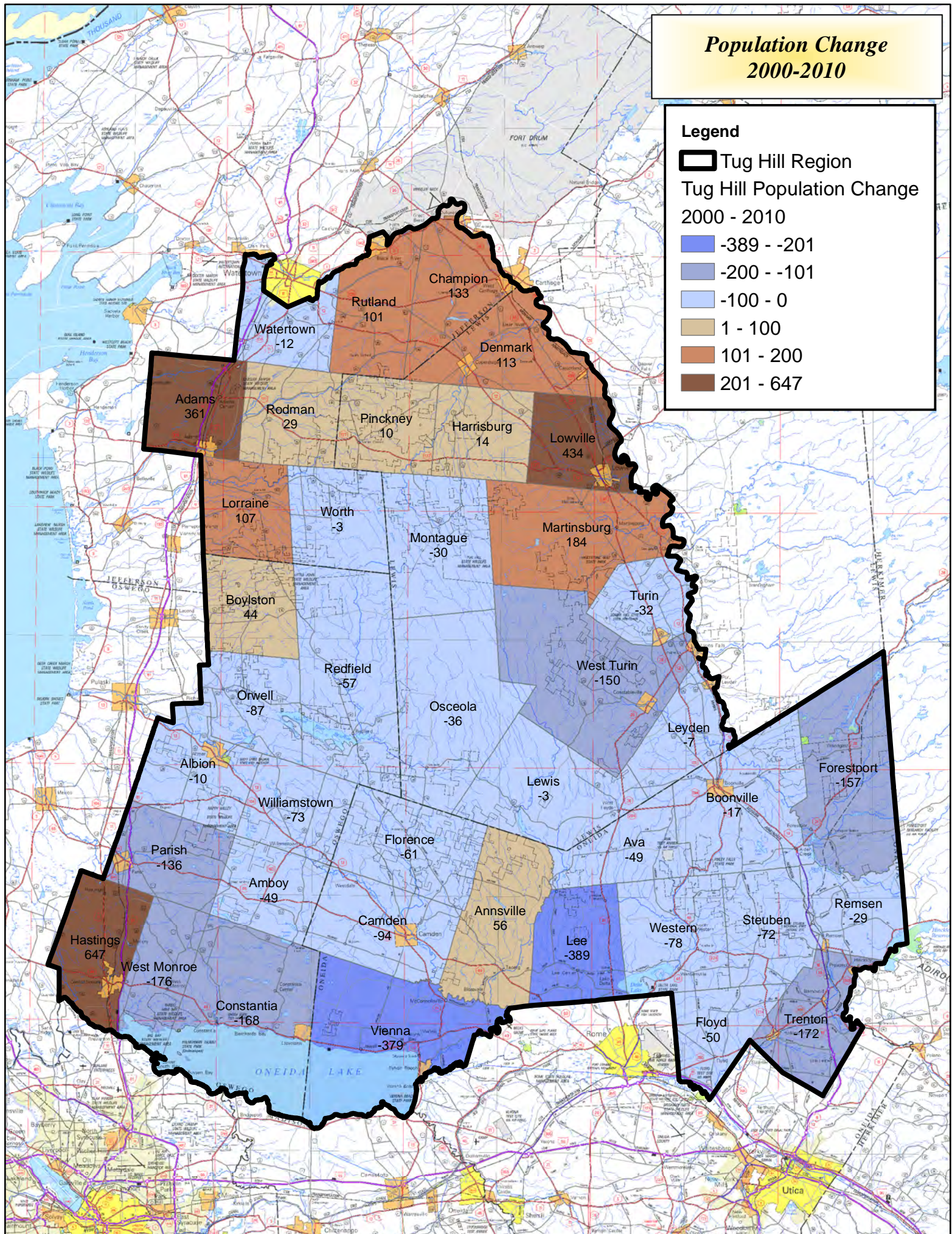
 -200 - -101

 -100 - 0

 1 - 100

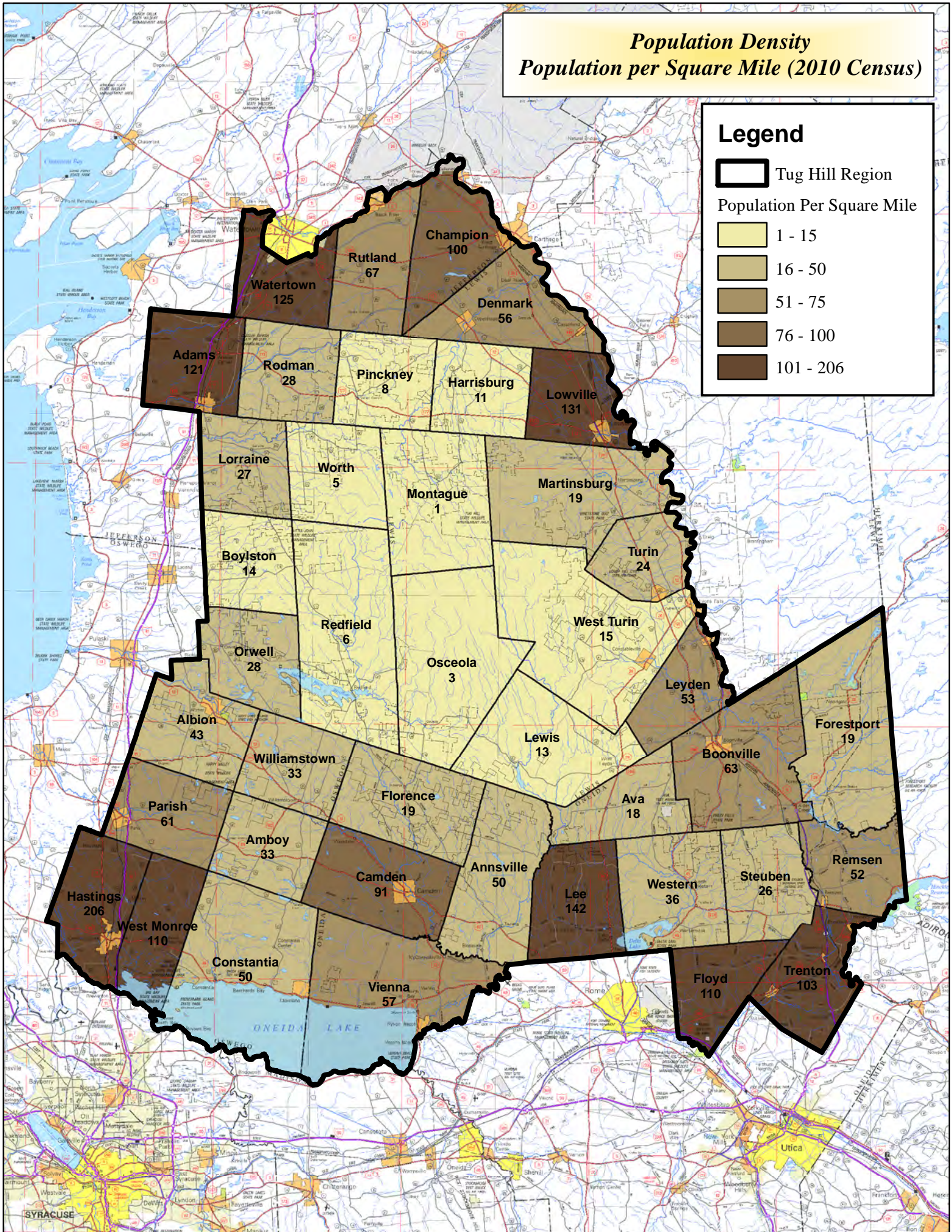
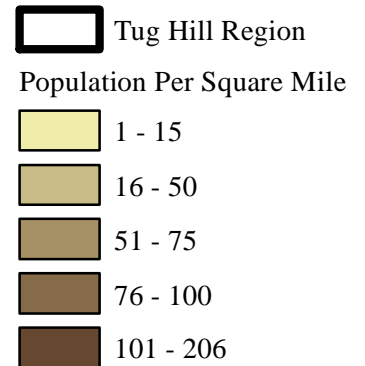
 101 - 200

 201 - 647



Population Density *Population per Square Mile (2010 Census)*

Legend





Median Age (2008-2012 ACS 5-Year Estimate)

Legend

 Tug Hill Region

Median Age (Male & Female)

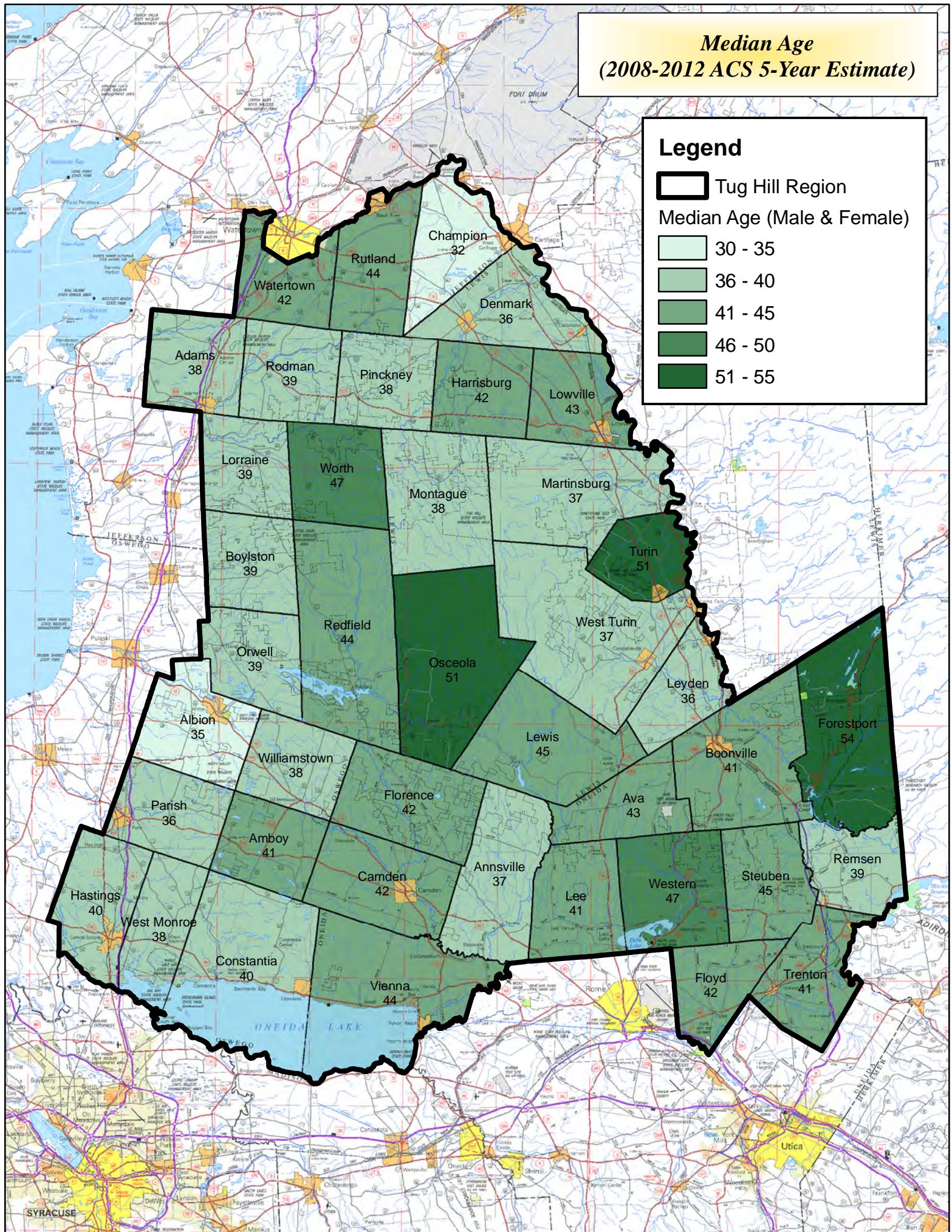
 30 - 35

 36 - 40

 41 - 45


 46 - 50

 51 - 55





Median Household Income **2008-2012 ACS 5-Year Estimate**


Legend


 Tug Hill Region


Median Household Income (dollars)

 39,250 - 45,000

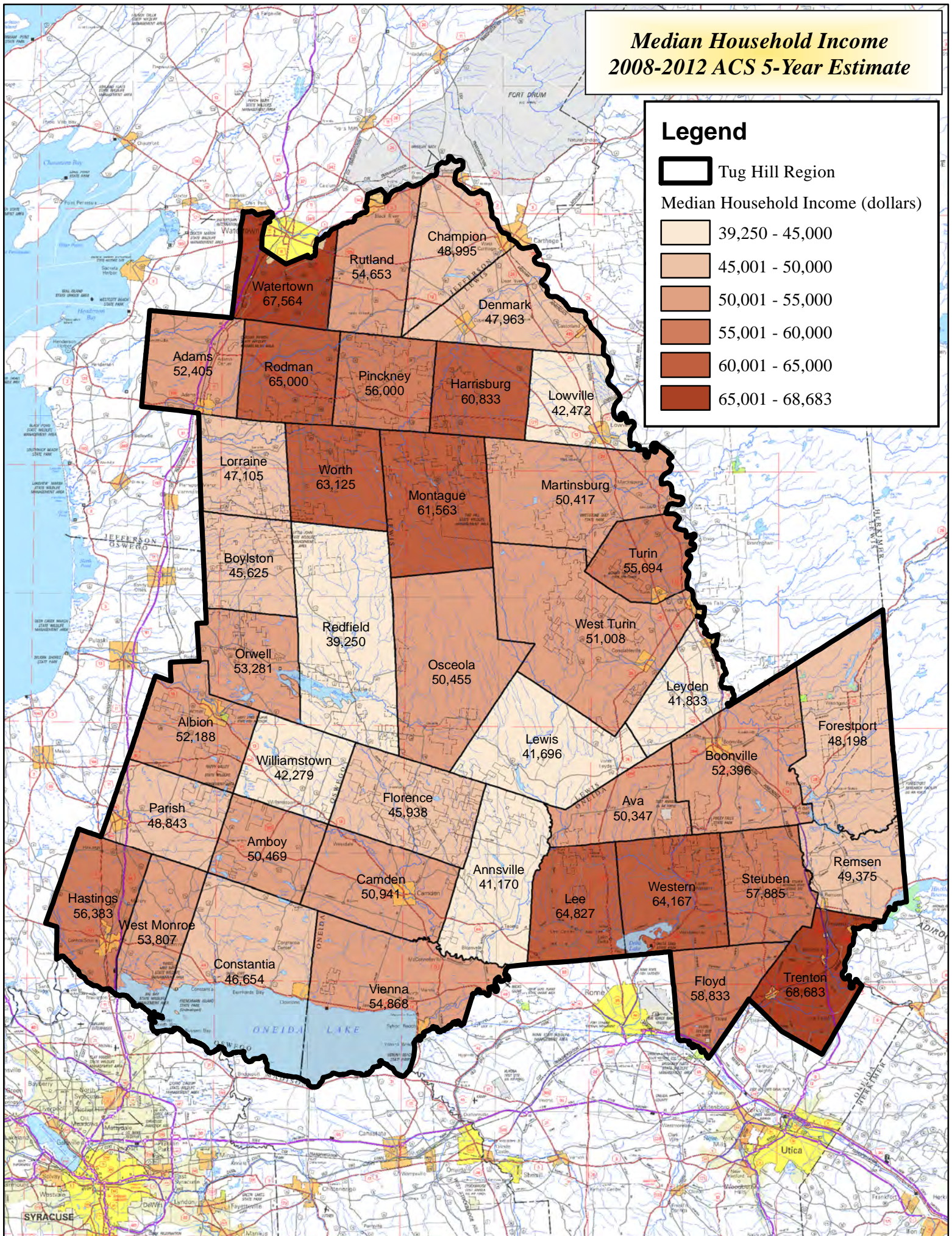
 45,001 - 50,000

 50,001 - 55,000

 55,001 - 60,000

 60,001 - 65,000

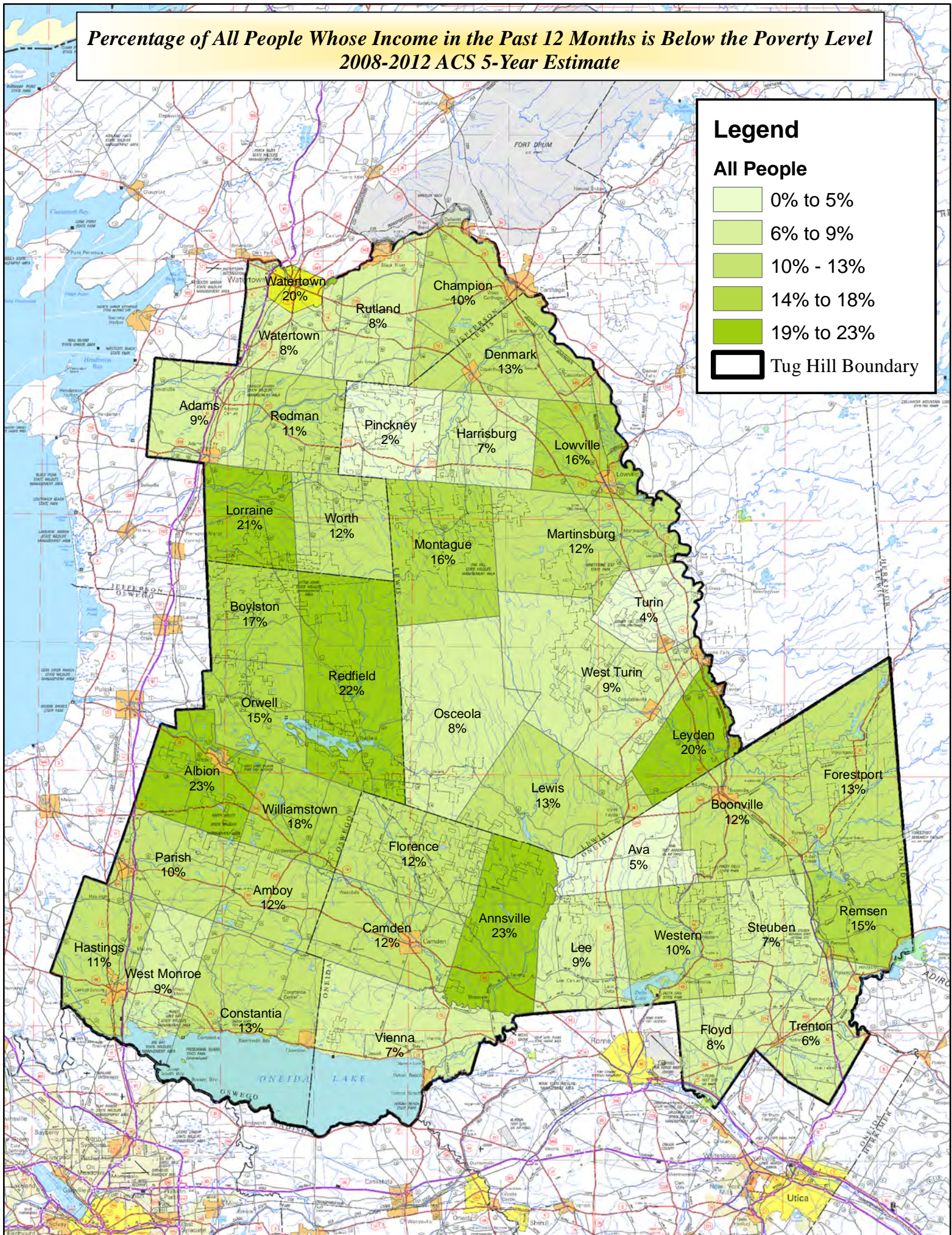
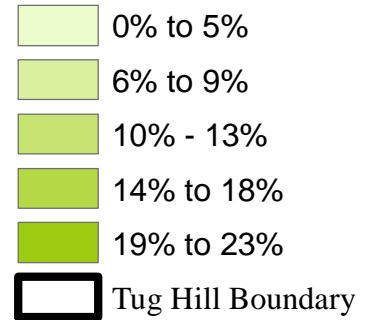
 65,001 - 68,683



**Percentage of All People Whose Income in the Past 12 Months is Below the Poverty Level
2008-2012 ACS 5-Year Estimate**

Legend

All People

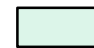



**Total (Estimated) Households
2008 - 2012 ACS 5-Year Estimate**

Legend


 Tug Hill Region


Total (est.) Households

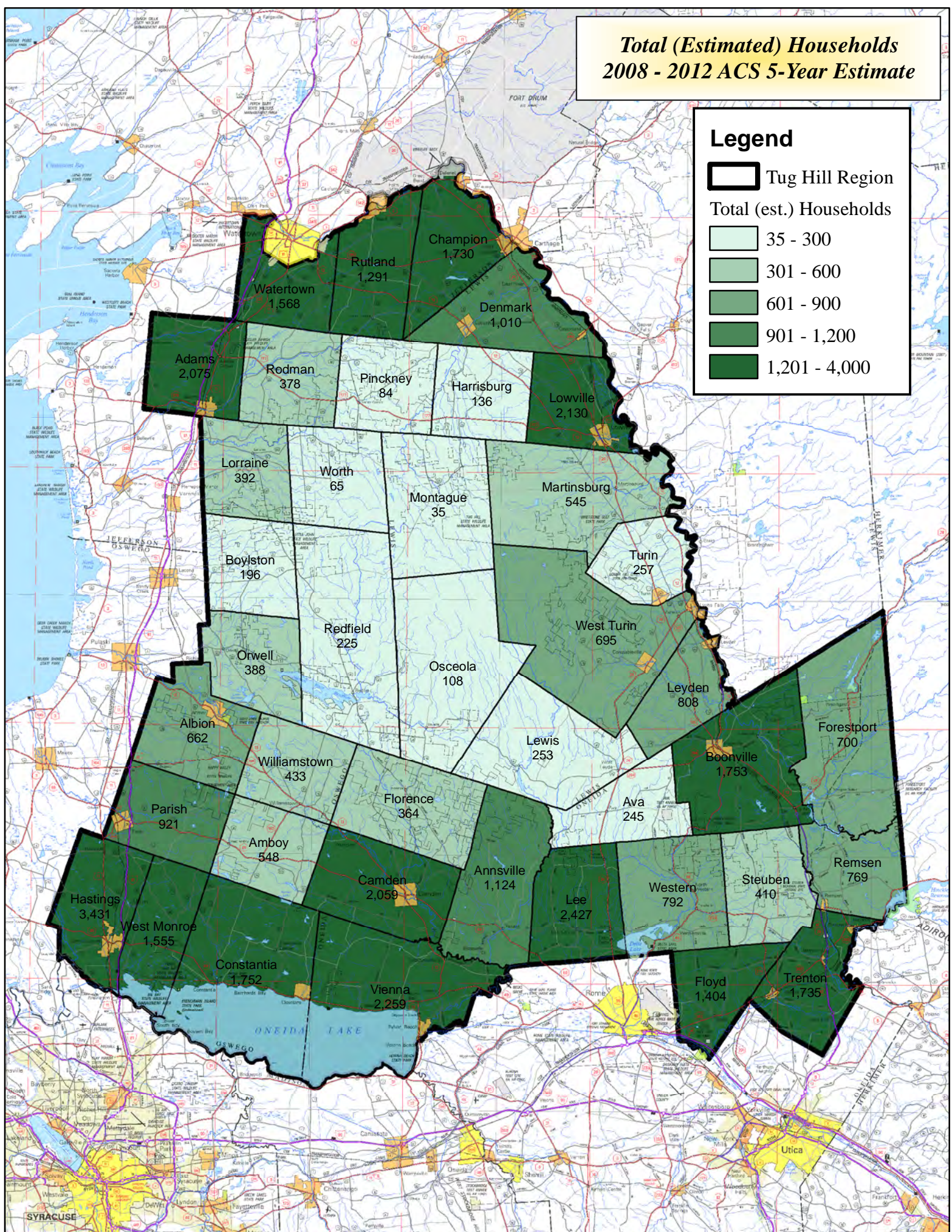
 35 - 300

 301 - 600

 601 - 900

 901 - 1,200

 1,201 - 4,000





**Percent Owner-Occupied
2008-2012 ACS 5-Year Estimate**


Legend


 Tug Hill Boundary

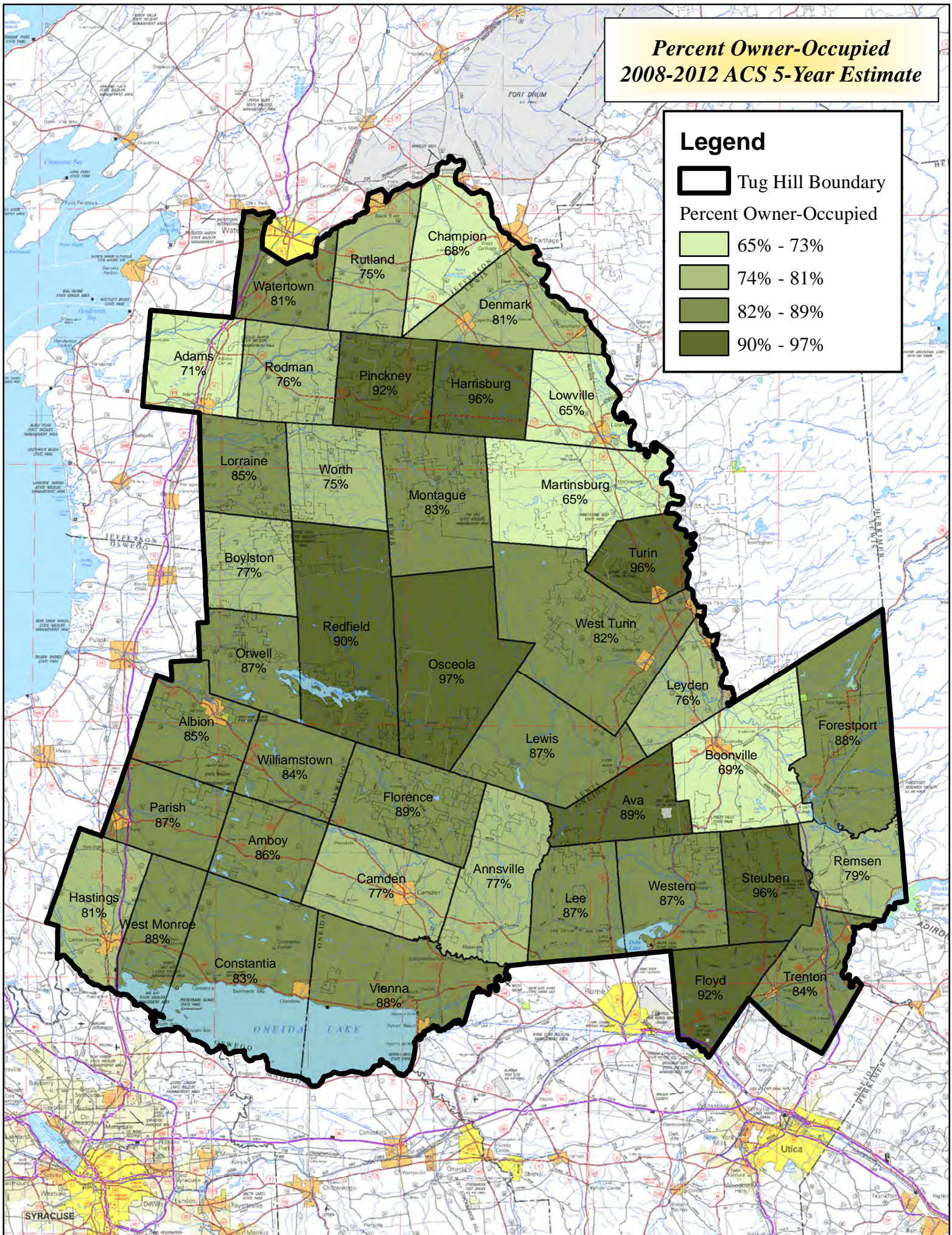
Percent Owner-Occupied

 65% - 73%

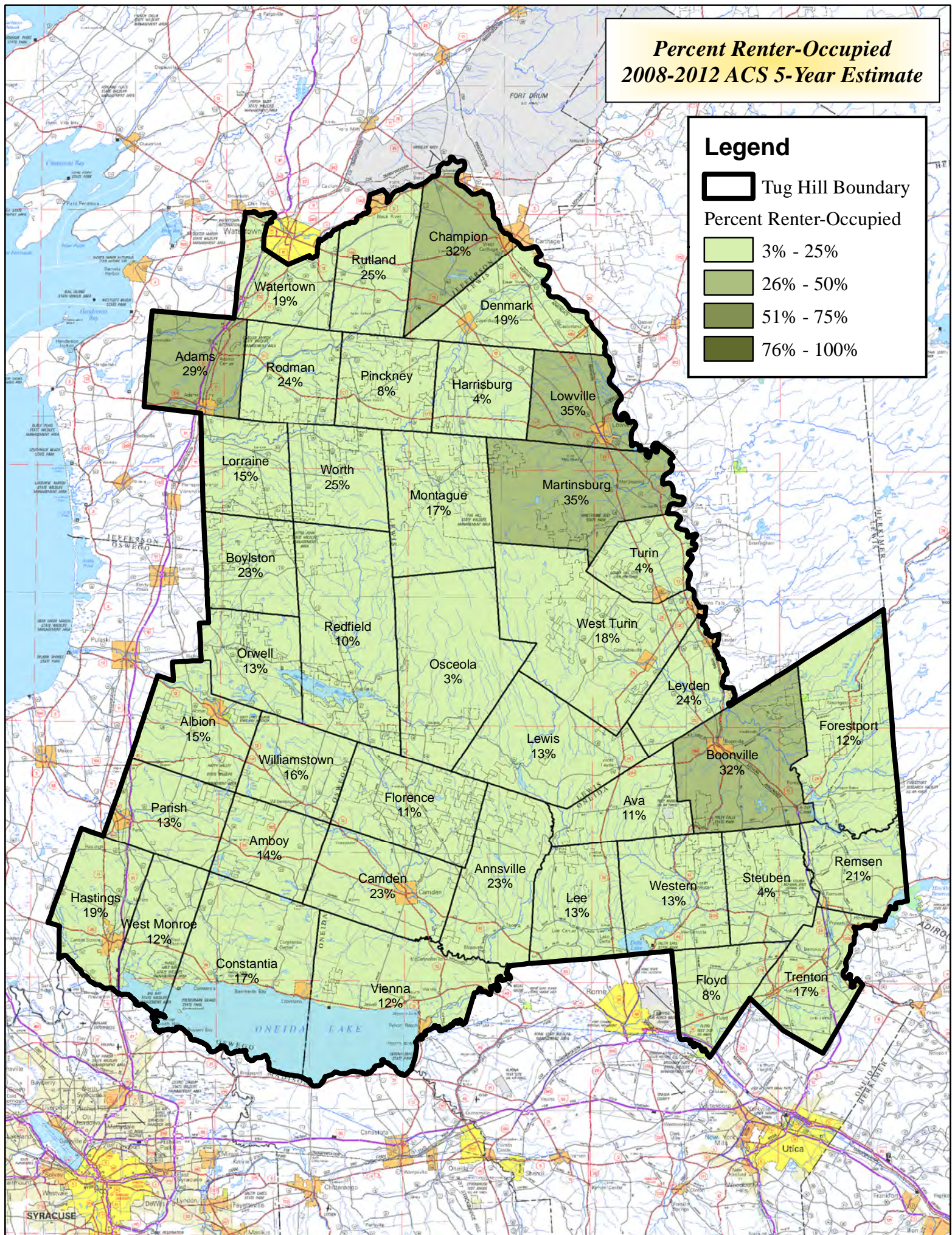
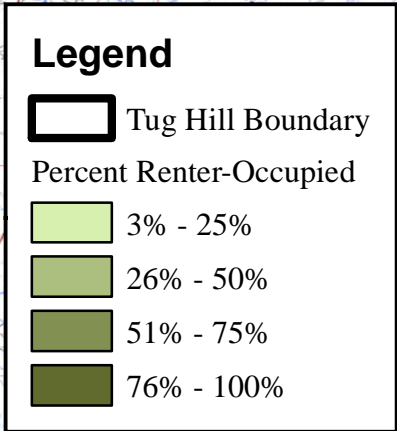
 74% - 81%

 82% - 89%

 90% - 97%



*Percent Renter-Occupied
2008-2012 ACS 5-Year Estimate*



**Percent Vacant Housing
2008-2012 ACS 5-Year Estimate**

Legend

