

**October 3, 2014**

25 local officials joined Tug Hill Commissioners and Staff in Redfield this past Tuesday night (September 30) for a Strategic Planning Session to kickoff development of the Tug Hill Commission's 2015-19 Strategic Plan. The evening began with an overview of the results of the 2013 Local Leaders Survey and the three primary areas that the Commission provides support for: land use planning, community development, and natural resources. A fourth area, local governance, was also an emphasis of the evening as Commission staff has noticed an increased interest in assistance related to governance issues.

A woman with long brown hair and glasses, wearing a dark patterned top and white pants, stands in a room and speaks to a group of people. She is holding a white paper with both hands. To her left is a staircase with a black railing. In the foreground, the back of a man's head and shoulders are visible, showing he is part of the audience. The room has light-colored walls and a window with a metal frame in the background.

**Tug Hill Commission Strategic Planning  
September 30, 2014  
Land Use Planning Station**

## Land Use and Development Analysis

[illegible]

# Tug Hill Commission Strategic Planning September 30, 2014 Community Development & Infrastructure

New York State | Tug Hill Commission | Community Development

Tug Hill Commissioner: Mike Yerdon  
Commission Staff: Katie Malinowski & Carla Malmgren

Page 2

## What is Community Development?

Community Development is working in communities using a ground-up, participatory approach to identify & prioritize needs that results in connecting people with the resources needed to improve quality of life for all living and working there.

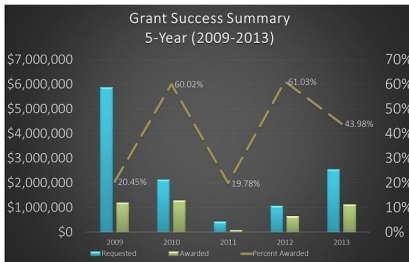
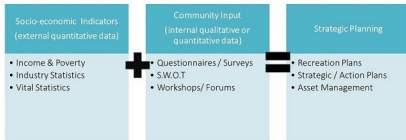
## What are Community Development activities?

- ❑ Work with Local Groups: non-profits formation; fundraising; strategic planning; marketing
- ❑ Strategic Planning: facilitate community brainstorming; surveys; reports; project prioritization
- ❑ Project Development: consensus building; research; grant writing; assist with project management
- ❑ Economic Development: downtown revitalization; adaptive building reuse; historic preservation & streetscape beautification
- ❑ Park & facility development: municipal offices; records storage; playgrounds; parks & trails
- ❑ Infrastructure: sewer; water; storm water; energy; communications
- ❑ Recreation & Tourism: Black River Blueway & Scenic Byway development and promotion

## What are some recent Technical Assistance requests?

- ❖ Can you assist with a Tourism Destination Area application process?
- ❖ What is the proposed MVREDC Land Bank all about?
- ❖ Who can do an income survey that funders will accept for a water project?
- ❖ Are there grants to demolish a town building that may have asbestos?
- ❖ Can you help us to GPS pipes, electrical, & other infrastructure?
- ❖ Can you help us access CDBG funding for infrastructure and economic development?

## Identifying Community Needs



## Project Prioritization & Development-Be Strategic!



- Tug Hill Commission works with a Revitalization Committee to improve a village downtown
- At the onset of a Main Street revitalization project, an important corner block building collapses before the building can be stabilized
- Grants were obtained first for designs and later to match downtown property owners renovation and facade work investment, which also included streetscape improvement
- Concept designs help define your project and get support and funding.
- Schematic drawings can assist contractors to bid on your project.
- A community park builds momentum for future improvements!

Mayor Katie Lienedecker (right) from Lyons Falls reviewed the various assistance provided to the Village since the early 2000's mostly related to community development.



Supervisor Sherry Harmych (above) discussed Pinckney's experience in shared services related to justice courts and highway equipment.



### "Keep it the way it is"

The Commission works with local partners to preserve the integrity of the natural resources of Tug Hill for current and future use and enjoyment.

### Focus Areas

- ❖ Community Projects
  - ❖ Special Areas Mapping
  - ❖ Tree Planting Grants
  - ❖ Wildlife Connectivity
- ❖ Water Resources
  - ❖ Watershed Management Plans
  - ❖ Tug Hill Aquifer Study
  - ❖ Stormwater Management (MS4)
- ❖ Land Conservation
  - ❖ Land use & Ownership Analyses
  - ❖ Invasive Species
- ❖ Recreation
  - ❖ Trail Development
  - ❖ Access Improvements

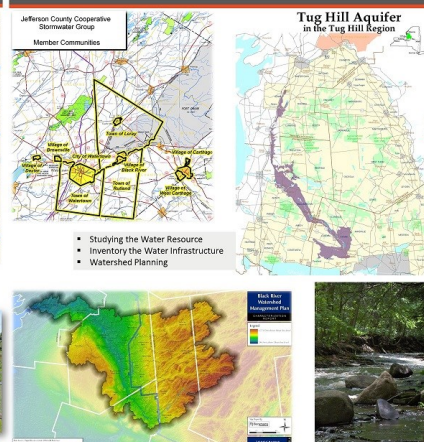
### How Do We Work?

- ❖ Partnerships
  - ❖ Non-Governmental Organizations: Tug Hill Tomorrow Land Trust, Wildlife Conservation Society, The Nature Conservancy
  - ❖ Agencies: Soil & Water Conservation Districts, NYS Department of Environmental Conservation, U.S. Geological Survey
- ❖ Project Development
  - ❖ Mapping
  - ❖ Grant writing
- ❖ Education & Outreach
  - ❖ Technical and Issue Papers
  - ❖ Partner Meetings
  - ❖ Research

### Recreation



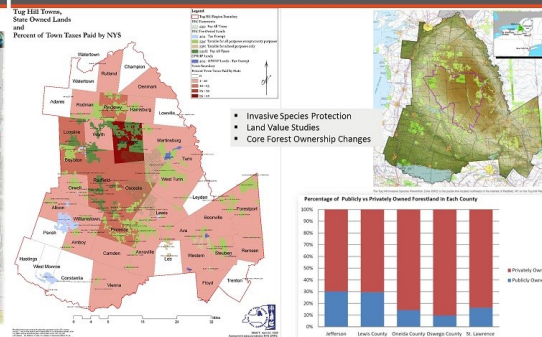
### Water Resources



### Community Projects



### Land Conservation



## Highlights of 2013 Local Leaders Survey results:

### Survey Responses:

371 surveys mailed with 152 responses – 41% response rate  
36 of 41 Tug Hill municipalities responded  
Respondents represented elected officials as well as appointed board members

97% of the respondents said they frequently (54%) or occasionally (43%) work with the Commission.

In regards to the **IMPORTANCE** of Commission programs for the first time in 35 years there was no discernable difference in the demand for environment, training or planning services. All at 97%.

In regards to **EFFECTIVENESS** of Commission programs:

92% on workshops and training  
88% on helping communities protect the environment  
85% on land use planning assistance

In regards to the Commission's **ROLE** in the region:

98% believe it is important for the Commission to continue its mission – Highest ever!  
93% agree that the Commission provides services which local governments need or cannot provide themselves.  
91% believe it is important for intermunicipal cooperation and planning for the region.

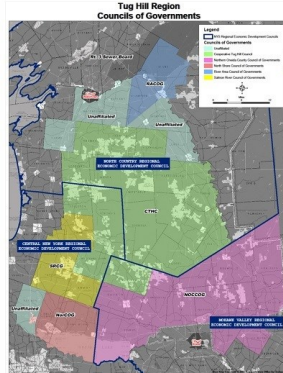
You can view the 2013 Local Leaders Survey results here: [http://www.tughill.org/projects/strategic\\_plan/](http://www.tughill.org/projects/strategic_plan/)



## Local Governance

- ❖ 5 Councils of Governments
  - Cooperative Tug Hill Council
  - North Shore Council of Governments
  - Northern Oneida County Council of Governments
  - River Area Council of Governments
  - Salmon River Council of Governments
- ❖ Shared Services
  - Shared Justice Court (Harrisburg, Pinckney, Montague)
  - Shared Assessing (Osceola, Montague)
  - Shared Highway Equipment (Harrisburg, Pinckney, Montague)
- ❖ Consolidations & Mergers
  - Trenton Fire Department
  - V Altmar/T Albion
  - V Prospect/T Trenton
- ❖ Real Property Tax Cap
  - Limits amount Local Governments and School Districts can increase property taxes
- ❖ Inter Regional Efforts
  - Northern Forest
  - Great Lakes
  - Regional Economic Development Councils

## Councils of Governments



## Shared Services



## Consolidations & Mergers



## Property Tax Cap

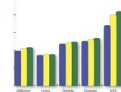
### Tug Hill State Property Tax Freeze Credit Fact Sheet

The Property Tax Freeze Credit is a revenue-neutral program that encourages qualifying Tug Hill townships to freeze their property tax rates for a period of five years. The program is designed to provide a stable and predictable tax environment for residents and businesses alike.

Eligibility requirements:

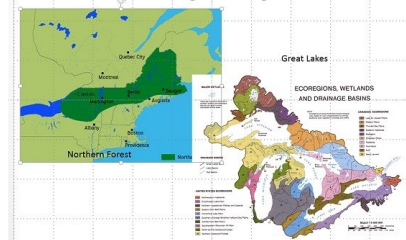
- 1. The program is available to all townships in the Tug Hill region.
- 2. The program is available to all townships that have a property tax rate of 1.0% or less.
- 3. The program is available to all townships that have a population of 10,000 or less.
- 4. The program is available to all townships that have a median property tax rate of 1.0% or less.

### MEDIAN PROPERTY TAXES PAID



## Inter Regional

### State and Regional Significance of the Tug Hill Region



Participants were divided into four groups and took turns at the four stations that were set up around the fire hall. Each group was given an overview of the station's topic, and then asked:

**How important to you feel each topic is in terms of Commission resources?**

**What specifically might the Commission work on related to each topic over the next five years?**

Tug Hill Commissioners and staff thank everyone who took the time to participate in Tuesday night's session. For those who were unable to attend, please contact the Commission office with your thoughts or ideas on these two questions. Related material is available on the Commission's website at: [http://www.tughill.org/projects/strategic\\_plan/](http://www.tughill.org/projects/strategic_plan/)

### Contact us at:

### NYS Tug Hill Commission

317 Washington St.  
Watertown, NY 13601

We are located on the  
6th Floor of the Dulles  
State Office Building.

Phone: 315-785-2380

Toll Free within the  
region:

1-888-785-2380

Email:

[tughill@tughill.org](mailto:tughill@tughill.org)

Website:

[www.tughill.org](http://www.tughill.org)

